

YOKOHAMA

SUMMER TYRE CATALOGUE 2024

▶ PCR / SUV / LIGHT COMMERCIAL VEHICLES + ALL SEASON



The EVolved Premium Tyre

ADVAN *Sport* **EV**

This is YOKOHAMA

The Global Tyre Brand since 1917

The YOKOHAMA Rubber Group is composed of the YOKOHAMA Rubber Co., Ltd. and 142 consolidated subsidiaries, 8 unconsolidated subsidiaries and 36 affiliates around the world.

Original Equipment

YOKOHAMA tyres have been adopted worldwide by car manufacturers with a global reputation and in a wide range of vehicle categories, being the Tyre supplier for premium cars.



The BluEarth Concept

BluEarth. The Product Engineering Philosophy, which focuses on the idea of responsibility towards the Environment and Society constantly.



Our Philosophy, to keep the focus on the responsibility towards the Environment and Society.

Winning in Red and Black

Under the colours red and black, YOKOHAMA's range of ADVAN Tyres can supply the tyres for World Championships and International top level Motorsport competitions.



Truly Global & Environmental

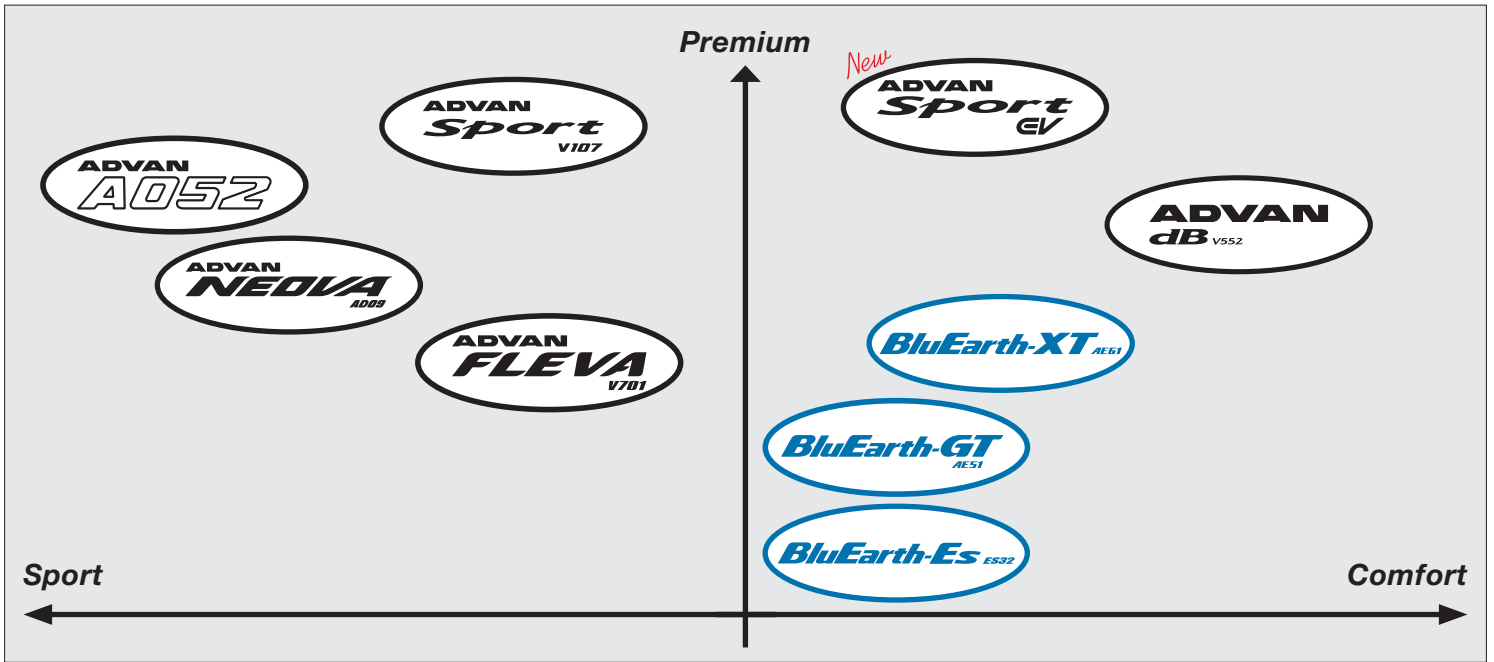
As a responsible acting company, taking care of our planet is part of the overall YOKOHAMA philosophy.

For information about the EU Tyre Label, tyre labelling data and further technical details, see the corresponding sections inside this catalogue or price list respectively. You can also refer to the YOKOHAMA website www.yokohama.eu (not for country specific product and size availability).

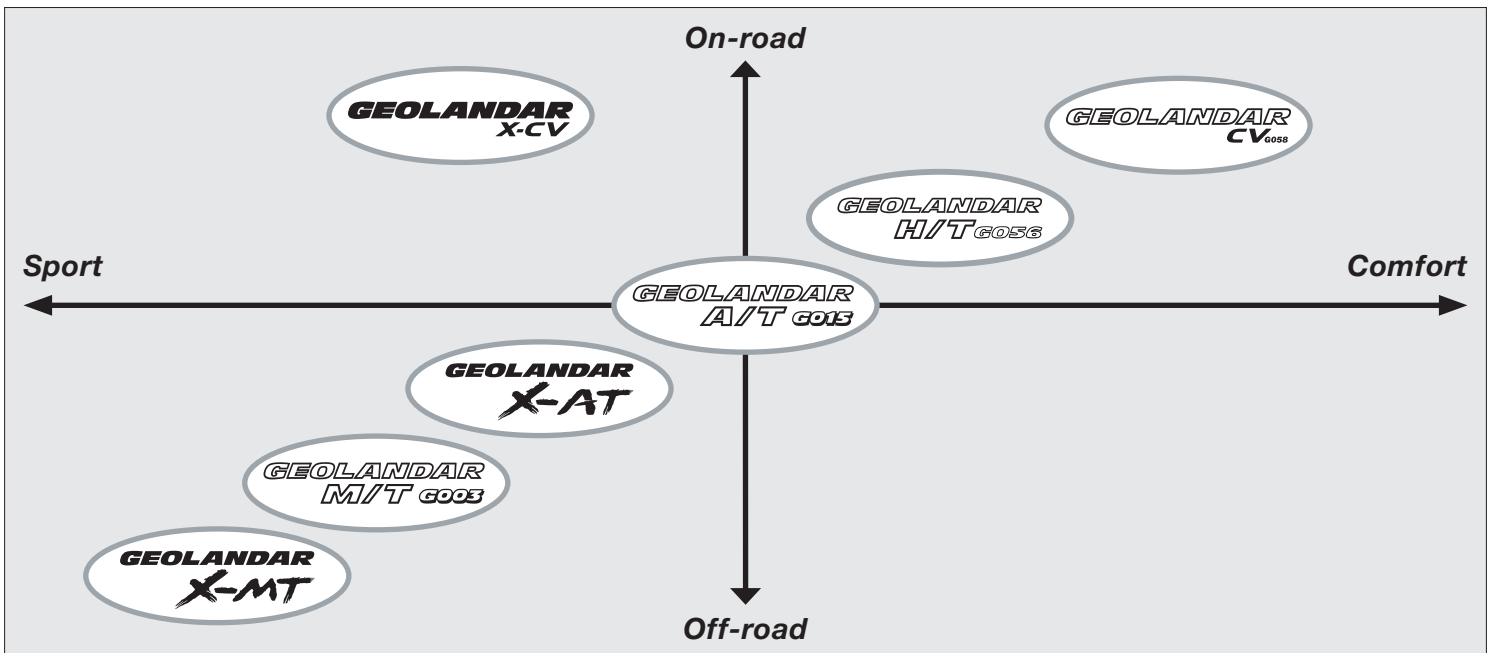
 **YOKOHAMA**

YOKOHAMA High Performance Tyres

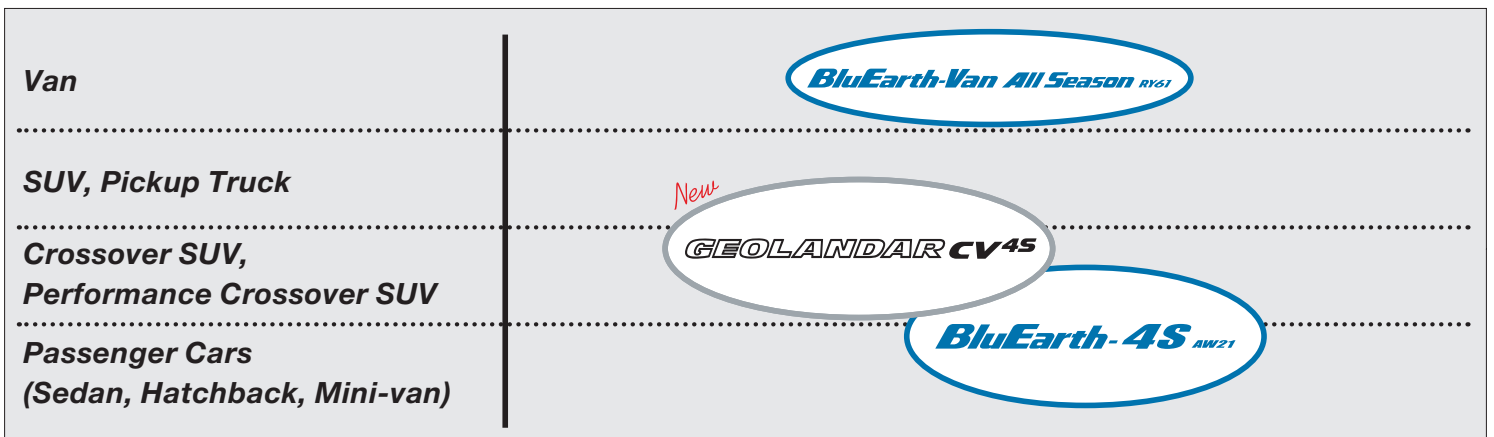
Summer Tyres



GEOLANDAR Tyres



All Season Tyres



The availability of products and the special size range offered can vary from country to country.

For detailed information about the available products and sizes offered in your country, the EU Tyre Label, tyre labeling data and further technical data, please see the corresponding sections in this catalogue or price list respectively or contact your local distributor or dealer. For basic information, you can also refer to the YOKOHAMA website www.yokohama.eu (not for country specific product and size availability).



The EVolved Premium Tyre

ADVAN *Sport EV*

For information about the EU Tyre Label, tyre labelling data and further technical details, see the corresponding sections inside this catalogue or price list respectively. You can also refer to the YOKOHAMA website www.yokohama.eu (not for country specific product and size availability).



YOKOHAMA

High performance summer tyre exclusive for EV



V108

Please see table section for available sizes.

ADVAN Sport EV



The Mark of EV Tyres



Renewable Energy supports the production of this tyre.

EU Label Range	
Fuel Efficiency Class	B-C
Wet Grip Class	A-B
External Rolling Noise Class and Measured Value (dB)	A-B 67-71
Series: 45 % - 35 %	Inches: 18-22

These values are for the full size range of this product. The special size range offered can vary from country to country. For detailed information on the sizes offered and the relevant parameters in your country, please refer to the table section.

One Size is waiting for final labeling results.

Application: Electric Sedan and SUV

Benefits

- Focus on Electrical range/consumption
- Comfortable ride experience
- Enjoy your drive with a tyre, that was designed with a focus on quietness

Features

- Silent foam, aiming to reduce road noise dramatically
- Proven V107 Pattern Design to assist safe drive
- A Special tread compound which was originally developed for premium OE, contributes to extended cruise range

V107 proven and reliable Pattern Design

WET GRIP

Wider 3+1 Main Grooves contribute to water drainage performance.

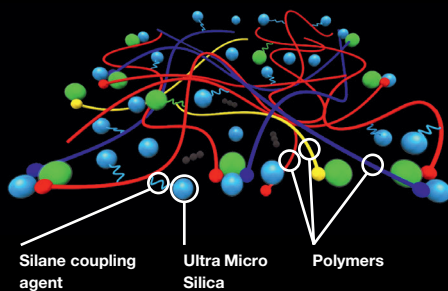
DRY GRIP

High-rigidity Wide Shoulder for powerful grip in dry conditions.

SILENCE



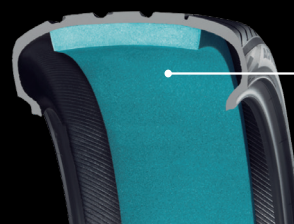
ADVAN EV Compound



• **Electricity consumption**
Consumption performance is achieved by uniformly blending Silica with a Silica dispersant.

• **Wet performance**
The polymer blend and Silica content focus on rolling resistance and wet performance.

Exclusively designed polyurethane foam



Exclusively designed polyurethane foam reduces cavity noise* which comes from uneven road surfaces and bumps. This gives a comfortable in-vehicle experience and suppresses noise outside the vehicle.

* The noise, which is transmitted from the wheel rims to the interior of the Car



GO BEYOND YOURSELF

ADVAN
NEOVA
ADO9

For information about the EU Tyre Label, tyre labelling data and further technical details, see the corresponding sections inside this catalogue or price list respectively. You can also refer to the YOKOHAMA website www.yokohama.eu (not for country specific product and size availability).

 **YOKOHAMA**

The Street Tyre for custom-tuned cars

ADVAN NEOVA AD09



AD09

Please see table section for available sizes.

EU Label Range	
Fuel Efficiency Class	D
Wet Grip Class	A
External Rolling Noise Class and Measured Value (dB)	B 70-74
Series: 50% - 30%	Inches: 17 - 21

These values are for the full size range of this product. The special size range offered can vary from country to country. For detailed information on the sizes offered and the relevant parameters in your country, please refer to the table section.

IMPORTANT CARE AND USAGE INSTRUCTIONS FOR ADVAN NEOVA AD09:

This tyre was developed using high performance compounds which become brittle at low temperatures, and therefore should not be used in certain conditions. The tyre thus must be stored or used only at temperatures at or above 14° F (minus 10° C) to maintain performance characteristics and to avoid any damage to the tyres or injury to persons or property.

Application: Club racers, Sport cars, Tuning cars

Benefits

- Dry performance, solid dry grip
- Controllability
- Long lasting circuit wear
- Cool, unique, original NEOVA design

Features

- Asymmetric tread pattern
- Casing rigidity
- Modern-looking side design

Meticulously designed Tread Pattern

Inside WET

Placement of thick vertical grooves is aiming to enhance water drainage

Round groove arrangement for drainage

Long lugs that cross the vertical grooves further support drainage

Outside DRY

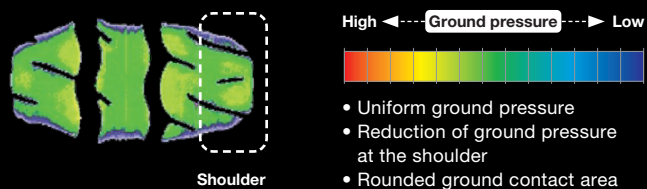
Narrow vertical groove close to tread's inner side provides large ground contact area

Continuous ribs to enhance tread rigidity

Round vertical grooves to disperse the lateral force and to suppress the shaving of the rib angle

Control and grip in cornering

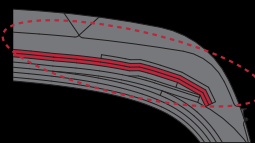
Shape of Ground Contact Area



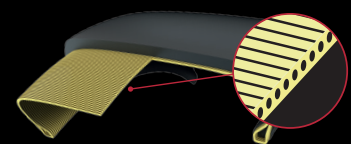
The load is concentrated on the outside ribs when cornering, so it is important to disperse the load. YOKOHAMA technology is aiming for load dispersion, tyre control and tyre life at the same time.

When cornering

Casing rigidity



Belt rigidity is achieved by two layers in the center part and three layers in the shoulder part.



In the carcass cross-section thickness and a high number of cords support the rigidity.



For information about the EU Tyre Label, tyre labelling data and further technical details, see the corresponding sections inside this catalogue or price list respectively. You can also refer to the YOKOHAMA website www.yokohama.eu (not for country specific product and size availability).

Sporty performance with premium comfort and design

ADVAN Sport V107



Please see table section for available sizes.

EU Label Range	
Fuel Efficiency Class	A-D
Wet Grip Class	A-B
External Rolling Noise Class and Measured Value (dB)	A-B 67-73
Series: 60% - 25%	Inches: 18 - 24

These values are for the full size range of this product, including Passenger Car & Premium SUV Tyres. The special size range offered can vary from country to country. For detailed information on the sizes offered and the relevant parameters in your country, please refer to the table section.

Some Sizes are waiting for final labeling results.

OE approved vehicles

(stand: 01/2024)

BMW
7 series, 3 series BEV, iX3, X3, X4, X5 MPA, X6 MPA, X7, XM

BMW M
M3, M3 Touring, M4

MERCEDES-AMG
EQS (BR297), GLA (H247), GLB (X247), GLE (W167), GLS (X167)

PORSCHE
Cayenne (E3PA)

Application: Ultra-high-performance Sedans & Coupé, EVs and SUVs

Benefits

- Ensuring high levels of reactivity, providing precise steering with driving stability when cornering, even at high speed
- Premium touch, stylish dark design effect on the sidewall
- Solid dry grip and wet braking

Features

- Exclusive Tread Pattern
- Improved Mound Profile
- Matrix Body Ply Structure – High-rigidity rayon carcass material
- Power Crown Belt Cover
- Special Compound – Ultra Micro Silica + Silica dispersed material

Tread Pattern

Silent sipes

Thin slits positioned on the inside of the ribs suppress external vehicle noise.



Variable Width

Circumferential Grooves (Wider 3+1 main grooves)
Aiming to reduce hydroplaning risk at high speeds.

High-rigidity Wide Shoulder

Improves pattern rigidity at ultra-high speeds, aiming for powerful grip on dry.



IN

OUT

Mound Profile

Optimises cross-sectional shape to ensure uniform ground contact pressure, in order to enhance stability at high speeds.



Before contact with road surface



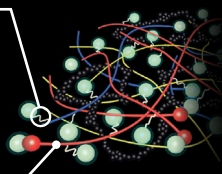
After contact with road surface

Special Compound

Grip performance through Ultra Micro Silica + Silica dispersed material.

Silane coupling agent

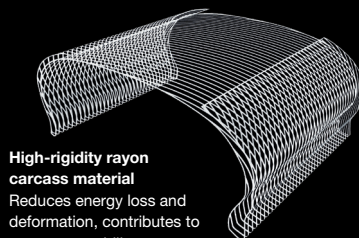
Adopting silane coupling agent, finely-balanced Silica aiming to improve wet grip.



Functionalised polymer + high strength polymer
Highly-strengthened and highly dispersive polymer aiming to improve dry and wet performance.

Matrix body ply structure

Steering precision without compromising comfort. Contributes to performance on DRY, conveying power to the road's surface.

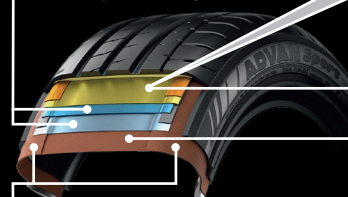


High-rigidity rayon carcass material

Reduces energy loss and deformation, contributes to greater operability.

The V107 structure

High rigidity steel belts to prevent the carcass from turning up at high speeds and to improve stability.



Matrix body ply offers improved circumferential rigidity for steering stability.

Power Crown Belt Cover

of highly rigid aramid fiber is used to improve steering stability on dry roads.

Rayon body ply within the tyre body meets the demands of European car manufacturers for Original Equipment Tyres.

Ultra Sport with Luxury



V105S

Please see table section for available sizes.

ADVAN Sport V105



Depend on sizes

EU Label Range	
Fuel Efficiency Class	B-D
Wet Grip Class	A-C
External Rolling Noise Class and Measured Value (dB)	A-B 69-75
Series: 65% - 25%	Inches: 16 - 23

These values are for the full size range of this product, including Passenger Car & Premium SUV Tyres. The special size range offered can vary from country to country. For detailed information on the sizes offered and the relevant parameters in your country, please refer to the table section.

OE approved vehicles

(stand: 01/2024)

- AUDI
RS6 (C7), RS7 (C7), TTS (TT3), TT RS (TT3)
- BMW
X3, X3 MPA, X4, X4 MPA
- BMW M
M5
- FIAT
124 Spider
- LOTUS
Elise (Sport/Sport 220/Sprint/Sprint 220)
- MAZDA
MX-5
- MERCEDES-BENZ
A-Class (W176), B-Class (W246), C-Class (BR205), C-Class (BR204), CLA (C117), CLS (C218), CLS-Shooting Brake (X218), GLC (X253), S-Class (BR222), S-Class Coupé (C217), SL (R231), SLC (R172)
- MERCEDES-AMG
CLS (C257), E-Class (BR213)
- PORSCHE
718 Boxster (982), 718 Cayman (982), 911 Carrera (991 II), Panamera (G1 II), Panamera (G2), Cayenne (E2 II), Cayenne (E3)
- SUBARU
Impreza, WRX (STI)

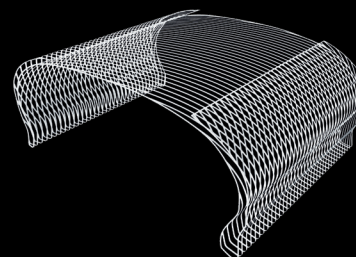
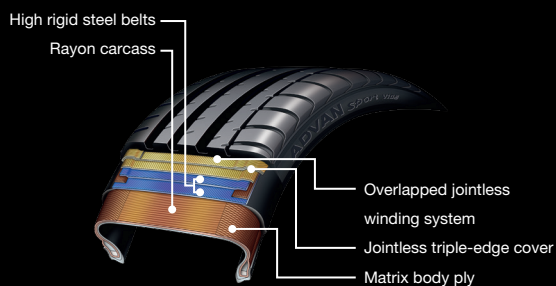
Application: Premium cars, High performance cars

Benefits

- A perfect balance of sport and comfort
- Solid wet grip and stability
- Grip and high stability during cornering
- OE approved quality

Features

- The YOKOHAMA advanced technologies for sport and comfort
- Born through joint developments with premium high performance car manufacturers



Matrix Body-Ply Construction

Breathtaking Silence for BEV and PHEV



V552

Please see table section for available sizes.

ADVAN dB V552

EU Label Range

Fuel Efficiency Class	C
Wet Grip Class	A-B
External Rolling Noise Class and Measured Value (dB)	A-B 67-71
Series: 65% - 35%	Inches: 15 - 21

These values are for the full size range of this product. The special size range offered can vary from country to country. For detailed information on the sizes offered and the relevant parameters in your country, please refer to the table section.

OE approved vehicles

(stand: 01/2024)

HONDA
ZR-V

Application: BEV, PHEV

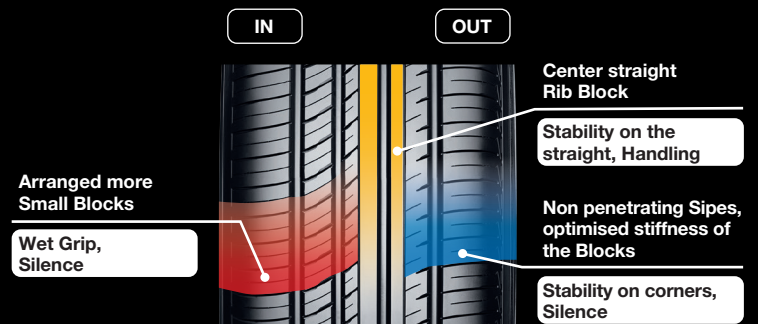
Benefits

- Breathtaking Silence
- Comfortable Ride

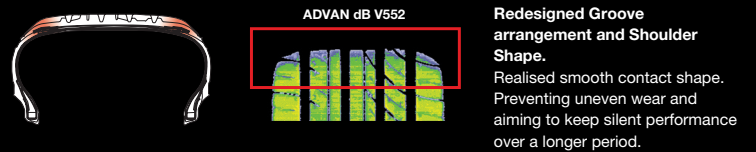
Features

- Sophisticated Small Block Design
- Redesigned Silent Tyre Structure
- Sidewall Profile Shape
- Shoulder Profile Shape

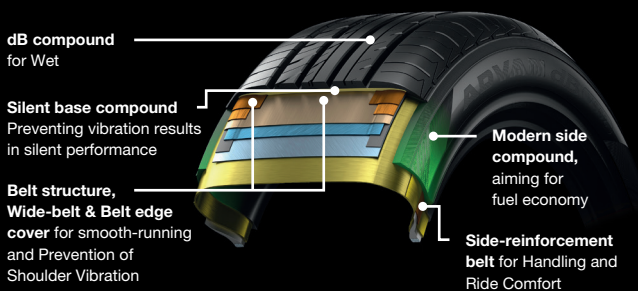
Sophisticated Small Block Design



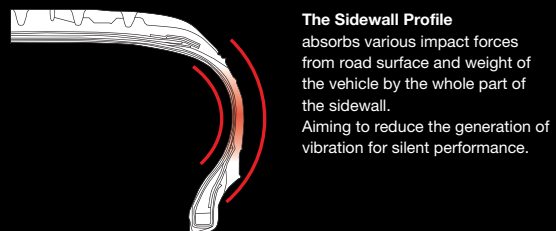
Shoulder Profile Shape



Redesigned structure for smooth-running



Sidewall Profile Shape



Giving the pleasure to control

ADVAN FLEVA V701



V701

Please see table section for available sizes.

EU Label Range

Fuel Efficiency Class	C-D
Wet Grip Class	A
External Rolling Noise Class and Measured Value (dB)	A-B 67-72
Series: 55 % - 30 %	Inches: 15-20

These values are for the full size range of this product. The special size range offered can vary from country to country. For detailed information on the sizes offered and the relevant parameters in your country, please refer to the table section.

Application: Lightly-Tuned and Sporty cars as well as Standard sedan and compacts

Benefits

- Cool & Attractive Pattern Design
- Emotional Handling
- Sport Tyre with focus on noise reduction

Features

- Optimisation of steering stability and ground contact
- Claw Grooves
- Wide Sword Grooves
- Lightning-shaped Straight Grooves

2 in 1 contrasting pitch



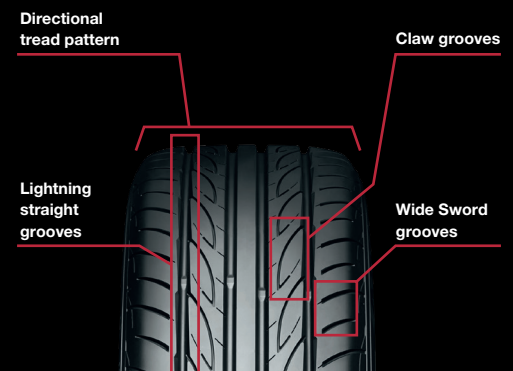
Increased tread pattern stiffness realizes a more direct feeling to handling. Optimised ground contact area. Aim is to enhance ride quietness.

Sporty Tyre with focus on noise reduction



Non-penetrating lug grooves aim to reduce noise. The blocks increase the stiffness to improve the direct handling and to reduce friction.

Wet Grip



Directional tread pattern

A directional pattern with more edges facing the road surface offers an attractive and aggressive look and aims to enhance water evacuation.

Claw grooves

The claw grooves push aside water at corners. The groove design increases effective groove length.

Lightning straight grooves

The main grooves have more edge components through a lightning-shaped design. This to improve traction and hydroplaning resistance.

Wide Sword grooves

The lug grooves have more edge components. The non-penetrating Lug Groove increases block stiffness to enhance the handling.

Street Legal, Track Ready



A052

Please see table section for available sizes.

ADVAN A052

OE approved vehicles

(stand: 01/2024)
LOTUS
Elise (Cup 250)

EU Label Range

Fuel Efficiency Class	D
Wet Grip Class	A-C
External Rolling Noise Class and Measured Value (dB)	B 69-73
Series: 60% - 30%	Inches: 13-20

These values are for the full size range of this product. The special size range offered can vary from country to country. For detailed information on the sizes offered and the relevant parameters in your country, please refer to the table section.

Application: Semi-Slick with racing performance

Benefits

- High sport performance on a dry track
- Powerful cornering capability
- The street-legal tyre complies with European standard for rolling resistance

Features

- Asymmetric, high rigidity tread pattern
- Specially developed Sport Compound

High-rigidity Tread Rib



Straight Thin Groove



Two Straight Grooves



Adapted Mound-Profile



IMPORTANT CARE AND USAGE INSTRUCTIONS FOR ADVAN A052 AND ADVAN NEOVA AD08RS:

The tyres were developed using high performance compounds which become brittle at low temperatures, and therefore should not be used in certain conditions. The tyres thus must be stored or used only at temperatures at or above 14°F (minus 10°C) to maintain performance characteristics and to avoid any damage to the tyres or injury to persons or property.

Gripping Performance



AD08RS

Please see table section for available sizes.

ADVAN NEOVA AD08RS

EU Label Range

Fuel Efficiency Class	D
Wet Grip Class	B-C
External Rolling Noise Class and Measured Value (dB)	B 70-72
Series: 60% - 30%	Inches: 14 - 19

These values are for the full size range of this product. The special size range offered can vary from country to country. For detailed information on the sizes offered and the relevant parameters in your country, please refer to the table section.

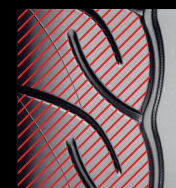
Application: Street-legal tuning cars and club racers

Benefits

- The fine-tuned compound for sporty feeling and performance
- The street-legal tyre complies with European standard for rolling resistance
- Stability and fast response during high-speed driving

Features

- Sequential Round Groove for long-life grip
- Uni-block Shoulder for rigidity of the tread
- Groove-in-Groove for even wear and stability



Sequential Round Groove

Uni-block Shoulder

Grand Touring Spirit

BluEarth-GT AE51



AE51

Please see table section for available sizes.



EU Label Range	
Fuel Efficiency Class	B-C
Wet Grip Class	A-C
External Rolling Noise Class	A-B
and Measured Value (dB)	67-71
Series: 65% - 30%	Inches: 14-20

These values are for the full size range of this product. The special size range offered can vary from country to country. For detailed information on the sizes offered and the relevant parameters in your country, please refer to the table section.

OE approved vehicles

(stand: 01/2024)

- LEXUS
- ES
- MAZDA
- CX-30, Mazda 2, Mazda 3
- TOYOTA
- Camry, Prius

Application: Grand and Mid Tourers, Luxury Cars, Premium Compact Cars

Benefits

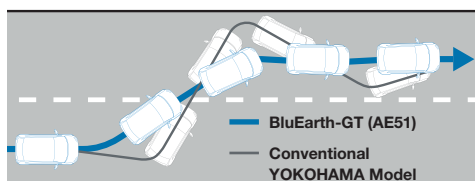
- Driving Stability at highspeed
- Solid wet grip
- Fuel Saving Properties

Features

- High-rigidity, asymmetric pattern for spirited driving
- Advanced Construction achieves both light weight and high durability
- Evolved Compound & honed profile

Straight-line Performance

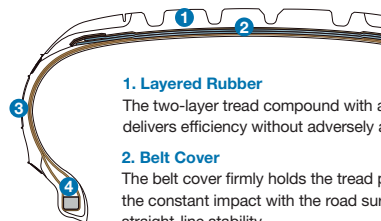
Eliminates Wobble During Lane Changes.



The construction aims to improve the overall balance of performance as well as High-Speed Stability. The result is a sharp steering response.

Construction

AE51's construction achieves light weight and high durability.



1. Layered Rubber

The two-layer tread compound with an advanced bottom rubber layer, delivers efficiency without adversely affecting the tread's grip performance.

2. Belt Cover

The belt cover firmly holds the tread portion, which must withstand the constant impact with the road surface, to maintain rigidity and straight-line stability.

3. Turn-up Carcass Construction

The tyre's construction - with the carcass tightly wound up to the shoulder to create a two-layer sidewall - achieves both light weight and high rigidity.

4. Bead Fillers

Bead fillers maintain sidewall stiffness. Different types of rubber were developed, component by component, with the goal of improving overall performance.

Asymmetric Pattern

Emphasizing Ride Comfort Inside, Steering Stability Outside.

The rigidity of the inside shoulder was tuned with fine grooves in a circumferential direction, for a smoother ride and greater comfort. A blind groove was adopted for the wide rib on outside shoulder, increasing rigidity.

INSIDE

Tuned rigidity for smooth ride and comfort



OUTSIDE

Realising high rigidity with a wide rib and blind groove

The Quality Standard Tyre

BluEarth-Es ES32



ES32

Please see table section for available sizes.



EU Label Range	
Fuel Efficiency Class	C
Wet Grip Class	B-C
External Rolling Noise Class and Measured Value (dB)	A-B 68
Series: 70% - 40%	Inches: 13-18

These values are for the full size range of this product. The special size range offered can vary from country to country. For detailed information on the sizes offered and the relevant parameters in your country, please refer to the table section.

Application: Compact cars, Small family cars

Benefits

- Focus on tread life and durability
- Stable driving behavior

Features

- Powerful and comfortable tread design
- 5 Pitch Tread Pattern
- Extra powerful profile
- nano BLEND compound

The powerful and comfortable tread design

Extra Powerful Profile

High rigidity and tough, Anti-uneven wear

Lightning Groove

High rigidity and proper edge volume
Safety, Drainage on Wet roads

Multiple Powerful Shoulder

Combination of deep lugs and sipes
Stability, Evacuation, Anti-uneven wear

Wide Straight Grooves

Anti-Hydro, Water draining on Wet braking
Straight driving and handling



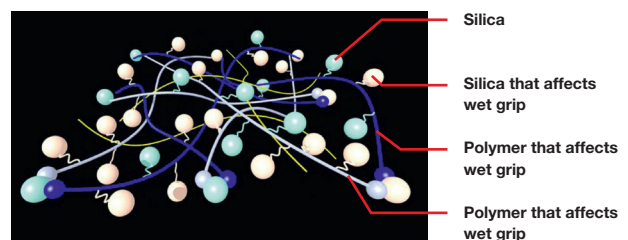
5 Pitch Tread Pattern

Designed with focus on pattern noise reduction and anti-uneven wear.



nano BLEND rubber compound

Includes double Silica and blend polymer.



Just for You, Urban SUV Tyre

BluEarth-XT AE61



AE61

Please see table section for available sizes.



EU Label Range	
Fuel Efficiency Class	B-C
Wet Grip Class	A-C
External Rolling Noise Class and Measured Value (dB)	A-B 67-69
Series: 70 % - 45 %	Inches: 16-20

These values are for the full size range of this product. The special size range offered can vary from country to country. For detailed information on the sizes offered and the relevant parameters in your country, please refer to the table section.

OE approved vehicles

(stand: 01/2024)

- LEXUS
- NX

Application: Urban SUV, Crossover SUV

Benefits

- Handling and steering stability on-road
- Resistance to uneven wear, specially made for SUVs with high centers of gravity
- Solid wet grip

Features

- Asymmetric pattern with optimally designed inside and outside
- nano BLEND rubber compound
- Optimised road contact surface shape

Pattern for Urban SUVs

Power Inside Shoulder

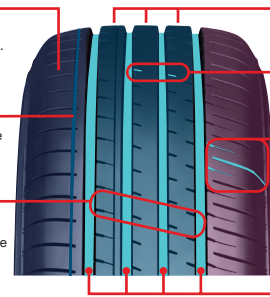
The high-rigidity shoulder aims to deliver superior steering stability. Its highly rigid tread block contributes to resist uneven wear.

Inside Narrow Groove

Focusses on wet grip performance in the circumferential direction of the tyre.

Optimising Lug Groove layout

Aims to reduce Air pumping noise by optimising the position of the non-penetrating lug grooves and dispersing the timing of contact between the grooves and road surface.



Triple Center Rib

Three high-rigidity ribs for straight-line stability at high speeds.

Silent Edge Groove

Grooves cut into the inner sides of the ribs, aiming to reduce the pass by noise.

High rigidity Active Shoulder

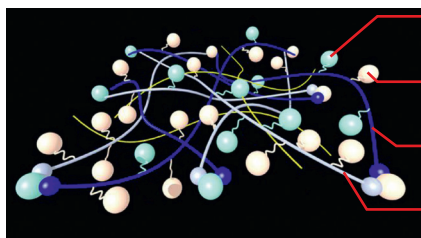
Ensuring shoulder stiffness by placing non-penetrating grooves and sipes for steering stability and anti-wobble.

Four Straight Grooves

Four main grooves for wet grip performance, aiming to deliver resistance to aquaplaning.

nano BLEND rubber compound

Includes double Silica and blend polymer.



Silica

Silica that affects wet grip

Polymer that affects wet grip

Polymer that affects wet grip

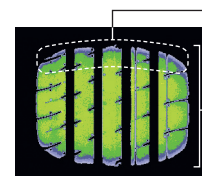
Five pitches Tread Pattern variations

Acoustic pressure simulations lead to the optimal layout for five types of pitches. Aim is suppression of pattern noise on paved roads.



Optimised road contact surface shape

Smooth road contact surface shape and uniform contact pressure achieve uneven wear resistance and straight-line stability.



Smooth road contact surface shape contributes to uneven wear resistance.

Optimised road contact surface shape length of center area aims to provide straight-line stability.

A tough Tyre for Commercial Vehicles

BluEarth-Van RY55



RY55

Please see table section for available sizes.



EU Label Range	
Fuel Efficiency Class	C
Wet Grip Class	B
External Rolling Noise Class and Measured Value (dB)	A-B 69-72
Series: 75 % - 55 %	Inches: 14-17

These values are for the full size range of this product. The special size range offered can vary from country to country. For detailed information on the sizes offered and the relevant parameters in your country, please refer to the table section.

OE approved vehicles

(stand: 01/2024)

TOYOTA
Hiace

Application: Transporters, Light Trucks, Cargos, modern Vans and Pick-Ups

Benefits

- Focus on mileage and durability
- Reliable Wet Braking characteristics

Features

- Powerful and tough tread design
- Advanced profile design and tough construction
- Compound developed with triple polymer and Silica
- Kerbing Rib for protecting against sidewall-damage

The powerful and tough tread design

Powerful Profile

High rigidity and tough, resists uneven wear.

Multiple Triangle Block

High rigidity and proper edge volume. Drainage on Wet roads.

Multiple Aggressive Shoulder

Combination of deep lugs and sipes. Stability, Evacuation, resists uneven wear.

Wide Straight Grooves

Anti-Hydro, Water draining on Wet braking. Straight driving and handling.



3 Pitch Tread Pattern

To reduce pattern noise and to resist uneven wear.

Off-road Traction and Extreme Design

GEOLANDAR X-MT

POR M+S

EU Tyre Label does not apply to POR marked tyres.



G005

Please see table section for available sizes.

Application: Extremely tuned Pick-ups & Off-road and dress-up SUVs

Benefits

- Traction on Off-road surfaces
- Traction on slippery surfaces

Features

- Rock Concept Design: the aggressive block pattern contributes to Off-road Traction
- Wide lug Groove and recess in Sipes
- Side Block Design: Tread Design extended to the sidewall, aggressive side block look

Wide Lug Groove and Recess in Sipes



Wide Lug Groove satisfies with Off-road Traction.



Recess in Sipes is YOKOHAMA key technology from GEOLANDAR A/T-S

Rock Concept Design



Symmetric Tread Pattern



The appearance of natural rock has been integrated into all aspects of design from the tread to the sidewall, to more effectively highlight the vehicles Off-road capability.

Side Block Design



The sidewall incorporates larger side blocks which suit the tyres large diameter. In addition to bolstering performance in deep mud and rock, the design boosts the overall Off-road performance. The sidewall also features solid lettering that differs from the normal logo usage for the GEOLANDAR brand which contributes to the Off-road look.

Merciless Traction

GEOLANDAR M/T G003

POR M+S

EU Tyre Label does not apply to POR marked tyres.



G003

Please see table section for available sizes.

Application: Mud-Terrain SUVs, 4x4s and Pick-ups

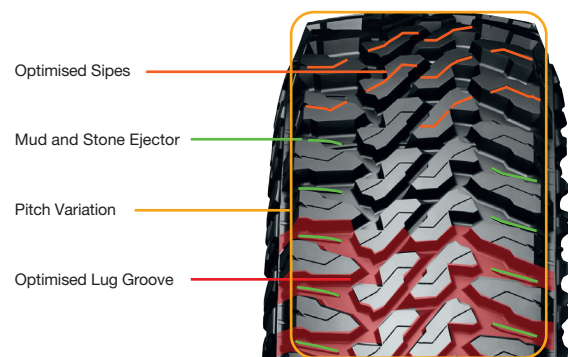
Benefits

- Off-road Traction
- Wear resistance with anti-cut and anti-chipping performance
- Comfortable Off-road Tyre

Features

- Wide tread with aggressive, symmetric block pattern
- Attractive sidewall design through extension of tread design
- High density compound with triple polymer blend

Aggressive symmetric block pattern

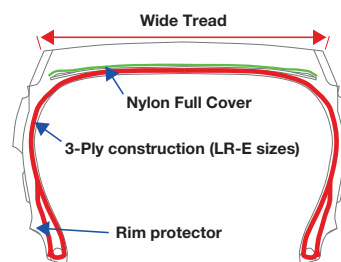


Extended tread design to sidewall



- The attractive side design extends from the tread to enhance the deep mud traction and to improve side cut performance.
- For durability and off-road traction.

Nylon Full Cover and Wide Tread Profile



Nylon Full Cover

A nylon full cover to improve tread area damage.

3-Ply construction (LR-E sizes)

To improve anti side cut performance.

Go-everywhere performance.



GEOLANDAR X-AT

YOKOHAMA

For information about the EU Tyre Label, tyre labelling data and further technical details, see the corresponding sections inside this catalogue or price list respectively. You can also refer to the YOKOHAMA website www.yokohama.eu (not for country specific product and size availability).

Go-everywhere performance

GEOLANDAR X-AT

POR M+S

EU Tyre Label does not apply to POR marked tyres.



G016

Please see table section for available sizes.

Application: All-Terrain Pick-up & Off-Road SUVs

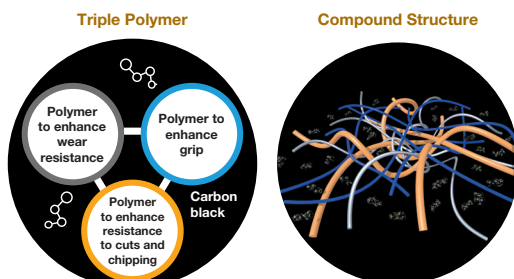
Benefits

- Focus on wear performance
- Off-road traction and durability

Features

- 2 in 1 Aggressive Tread Pattern
- Construction is aiming for Durability
- Compound Technology – High hardness Compound
- Two sidewall designs

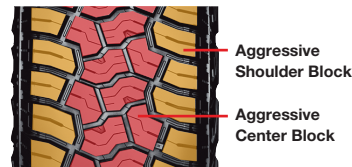
Compound Technology



High Hardness Compound contributes to Mileage, Anti-cut & Chipping, Handling and Off-road Traction

2 in 1 Aggressive Tread Pattern

Shoulder and Center Block



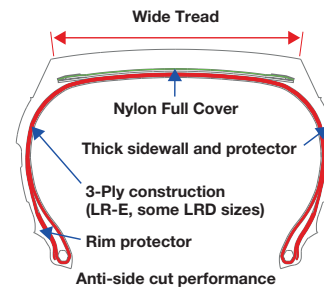
2 different Shape Shoulders and Center Block satisfying with Off-road traction.

Sipe-Shallow Groove Combination



Sipe-Shallow Groove Combination contributes to Wet and Slippery Surface Traction.

Construction



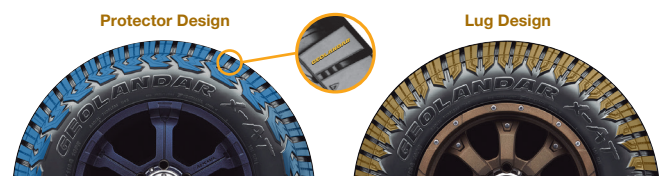
Nylon Full Cover

A nylon full cover to improve tread area damage.

3-Ply construction (LR-E, some LRD sizes)

To improve anti side cut performance.

Two Sidewall Designs



Two different Sidewall Designs. The Tread Design is extended to the side and into extreme aggressive side blocks. Brand Logos are raised in black letters on the tyre side, with additional GEOLANDAR Logos on 4 points at the shoulder.

All-terrain Tyre with advanced technologies

GEOLANDAR A/T G015



G015

Please see table section for available sizes.



EU Label Range	
Fuel Efficiency Class	E
Wet Grip Class	B-C
External Rolling Noise Class and Measured Value (dB)	A-B 70-73
Series: 80% - 45%	Inches: 15-22

These values are for the full size range of this product. The special size range offered can vary from country to country. For detailed information on the sizes offered and the relevant parameters in your country, please refer to the table section.

One Size is waiting for final labeling results.

Application: SUVs, 4x4s & Pick-ups

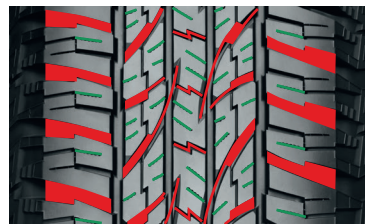
Benefits

- Cut and Chipping Resistance
- Aiming for Mileage performance
- Grip on snowy winter roads with Snowflake Mark (3 Peak Mountain Snowflake)

Features

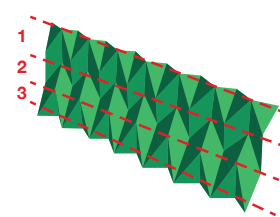
- Tread Pattern Technology with 3-D-shaped Sipes, Optimised Lug Grooves,
- 4 main grooves and pitch variation
- Nylon Full Cover and Wide Tread Profile
- Aggressive pattern and side design

Optimised Lug Groove



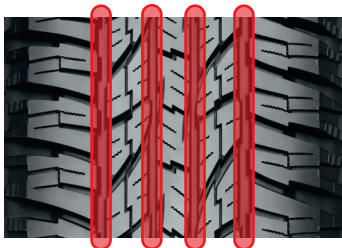
The optimised allocation of the lug grooves help to beat down off-road surfaces to support traction.

3-D Shaped Sipes



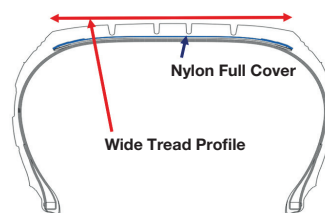
Original 3-D-shaped Sipes keep the stiffness of the blocks in dry surface, supporting wear resistance by ensuring the edge effect. On snow and wet surfaces, traction is supported.

4 Main Straight Grooves



4 Main Straight Grooves for drainage performance, anti-aquaplaning capabilities and to support wet braking.

Nylon Full Cover and Wide Tread Profile



Nylon Full Cover

A nylon full cover aims to reduce damage on the tread area for better durability.

Wide Tread Profile

The wide Tread Profile supports mileage, traction and high speed performance.

Aggressive Side Design



Comfort and Balance for your SUV

GEOLANDAR X-CV



G057

Please see table section for available sizes.



EU Label Range	
Fuel Efficiency Class	B-D
Wet Grip Class	B-C
External Rolling Noise Class and Measured Value (dB)	B 72-74
Series: 60% - 35%	Inches: 18-22

These values are for the full size range of this product. The special size range offered can vary from country to country. For detailed information on the sizes offered and the relevant parameters in your country, please refer to the table section.

OE approved vehicles

(stand: 01/2024)

LEXUS
LX

Application: Premium and Performance Crossover SUVs

Benefits

- Constructed for mileage performance
- Comfortable ride

Features

- Asymmetric pattern with 4 wide straight grooves
- 2-D & 3-D combination sipes
- 5 Pitch Variation
- Silica end-locked Polymer and Micro Silica

2-D & 3-D Combination Sipes



— 2-D sipe — 3-D sipe

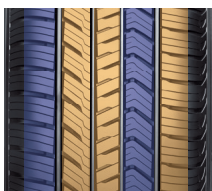
The combination of 2-D and 3-D sipes contributes to the tyre's traction and to mileage performance.

5 Pitch Variation



Noise reduction is the aim of the 5 Pitch Variation pattern design of GEOLANDAR X-CV.

Asymmetric Pattern and 4 Wide Straight Grooves



■ Dry Area
■ Wet Area

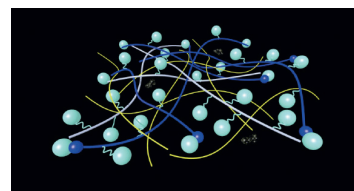


■ Groove

The asymmetric pattern design supports the traction and handling on wet and dry surfaces.

4 wide straight grooves to evacuate water and to reduce the risk of hydroplaning.

Silica end-locked Polymer and Micro Silica



Micro Silica is used to support stability on dry surfaces while Silica end-locked Polymer is focussing on wet performance.

Grand Touring Tyre for Crossover SUVs

GEOLANDAR CV G058



G058

Please see table section for available sizes.



EU Label Range	
Fuel Efficiency Class	D
Wet Grip Class	B
External Rolling Noise Class and Measured Value (dB)	B 71
Series: 80% - 50%	Inches: 15-20

These values are for the full size range of this product. The special size range offered can vary from country to country. For detailed information on the sizes offered and the relevant parameters in your country, please refer to the table section.

Application: Crossover SUVs

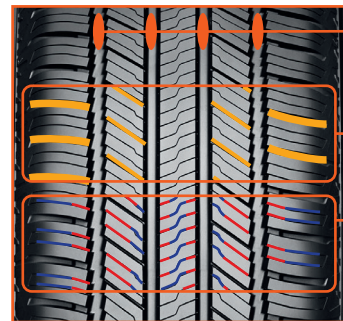
Benefits

- Constructed for mileage performance
- Comfortable ride

Features

- Advanced Compound Technology – Blend Polymer & Micro Silica
- Sipe based Symmetric Pattern with 4 Combination Main Grooves
- Wide and flat Contact Shape

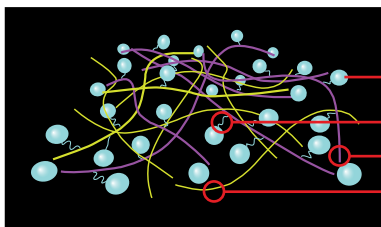
Tread pattern



- 4 Combination Grooves**
Combination of Center and Shoulder Grooves for traction and the reduction of hydroplaning risk.
- Sipe based Symmetric Pattern**
For traction and to reduce uneven wear.
- 2-D/3-D Combination Sipes**
Combined Sipes to support Traction and Mileage.
- 5 Pitch Variation**
Blocks with 5 Pitch Variation contribute to noise control.

— 2-D sipe — 3-D sipe

Advanced Compound Technology

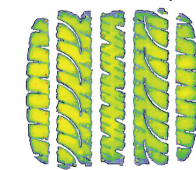


- Micro Silica
- Silica Dispersant
- Blend Polymer for wet
- Blend Polymer for snow

Advanced Compound Technology for Silica dispersion.

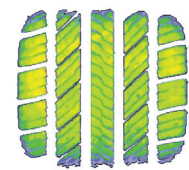
Profile and Contact Shape

Conventional Model (G055)



Traditional Profile Blocks

GEOLANDAR CV G058



Shoulder and 2nd Rib Round Profile Blocks

A wide and flat contact shape aims to improve even wear and to contribute to a higher Mileage. Traction is supported by round profile blocks for Shoulder and 2nd Rib.

Comfort, everywhere you go

GEOLANDAR H/T G056



G056

M+S

EU Label Range	
Fuel Efficiency Class	C-D
Wet Grip Class	B-D
External Rolling Noise Class and Measured Value (dB)	A-B 70-72
Series: 75% - 50%	Inches: 15-21

These values are for the full size range of this product. The special size range offered can vary from country to country. For detailed information on the sizes offered and the relevant parameters in your country, please refer to the table section.

OE approved vehicles

(stand: 01/2024)

MAZDA
CX-9

Please see table section for available sizes.

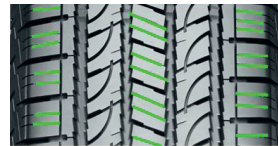
Application: New generation SUV and Pick up car tyre

Benefits

- Enjoy lasting comfort in cities, on highways and off-road
- Highway terrain tyre for 4x4 and SUV

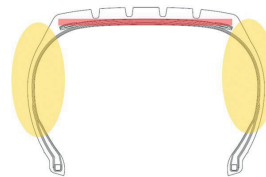
Features

- Tread design which aims to improve the pass-by noise
- 5 Pitch Variation to control the frequency peak
- Multiple lug grooves



3-D shaped sipes

Tread pattern stiffness is achieved by using 3-D shaped sipes.



Construction

Full Nylon cover is used to thicken the sidewall and to protect the tyre against lift-up of the belt during high speed driving and to prevent tread cracks and side cuts. This has a positive impact on the durability of the tyre.



5 pitch variation

The 5 pitch variation is the feature to control the frequency peak in a rolling tyre.



Multiple lug grooves

Multiple lug grooves to provide drainage and to reduce the risk of hydroplaning.

Transcend the Seasons with GEOLANDAR.



New



GEOLANDAR CV4S

For information about the EU Tyre Label, tyre labelling data and further technical details, see the corresponding sections inside this catalogue or price list respectively. You can also refer to the YOKOHAMA website www.yokohama.eu (not for country specific product and size availability).

 **YOKOHAMA**

The Tyre to transcend all Seasons

GEOLANDAR CV4S



G061

Please see table section for available sizes.



EU Label Range	
Fuel Efficiency Class	C
Wet Grip Class	B
External Rolling Noise Class and Measured Value (dB)	B 71-73
Series: 65% - 45%	Inches: 17-20

These values are for the full size range of this product. The special size range offered can vary from country to country. For detailed information on the sizes offered and the relevant parameters in your country, please refer to the table section.

Application: Crossover SUVs,
Performance Crossover SUVs

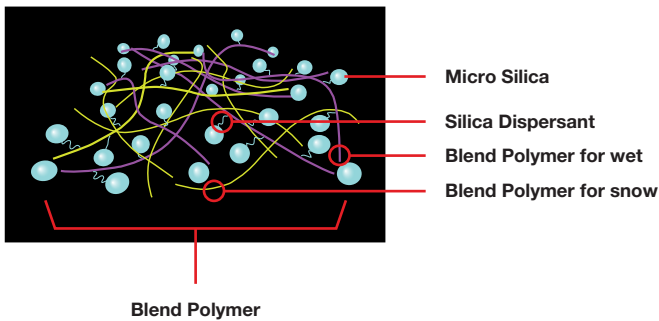
Benefits

- All-season Tyre
- Design Focus on Snow and Wet Performance

Features

- Asymmetric Tread design based on snow pattern
- Powerful side Design with highlighted logo and black letters
- Nylon Full Cover of the belt for Durability
- Tread Lug Grooves and Sipes for Snow Performance

Compound Technology



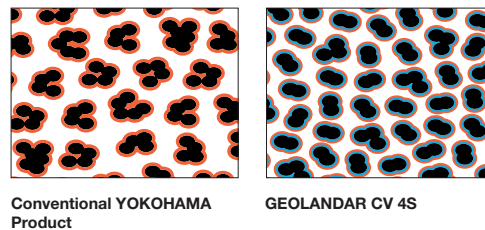
Asymmetric Pattern Design
for WET, SNOW and DRY



4 Zig-Zag Grooves
for Anti-Hydroplaning, WET and SNOW Traction



Micro Silica
Improved Silica dispersion



The One for All Seasons

BluEarth-4S AW21



AW21

Please see table section for available sizes.



Maximum speed
 300 km/h in case of Y speed symbol
 270 km/h in case of W speed symbol
 240 km/h in case of V speed symbol
 210 km/h in case of H speed symbol
 190 km/h in case of T speed symbol
 (Speed symbol varies depending on size)

EU Label Range	
Fuel Efficiency Class	C-D
Wet Grip Class	B-C
External Rolling Noise Class and Measured Value (dB)	B 70-73
Series: 70% - 35%	Inches: 14-21

These values are for the full size range of this product. The special size range offered can vary from country to country. For detailed information on the sizes offered and the relevant parameters in your country, please refer to the table section.

Application: Small and Compact cars, mid-size sedan, modern SUVs & CUVs

Benefits

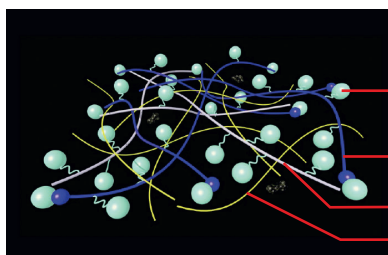
- Advanced compound for snow, wet and dry
- Grip in wintery conditions (snow)
- Sound braking performance on wet & dry summer roads
- Constructed for mileage performance

Features

- Divergent V-Groove
- Flat & Wide Contour
- Silica End-locked compound

Compound

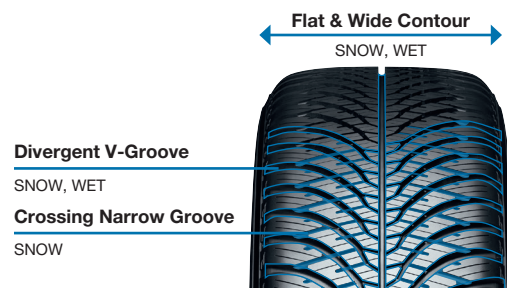
for SNOW/WET Performance



- Micro Silica
- Silica End-Locked Polymer
- Snow Grip Polymer
- Wet Grip Polymer

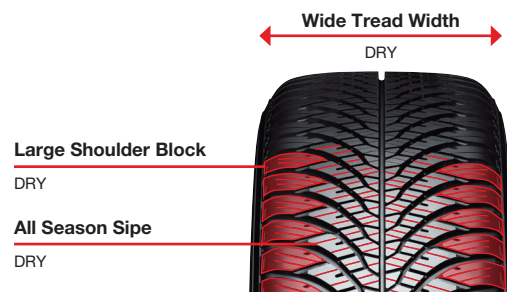
Tread Pattern Design

for SNOW/WET Performance



Tread Pattern Design

for DRY Performance



Strong and Smooth – Whatever the Season

BluEarth-Van All Season RY61



RY61

Please see table section for available sizes.



Maximum speed
 210 km/h in case of H speed symbol
 190 km/h in case of T speed symbol
 170 km/h in case of R speed symbol
 (Speed symbol varies depending on size)



EU Label Range	
Fuel Efficiency Class	C–D
Wet Grip Class	A–B
External Rolling Noise Class and Measured Value (dB)	B 73
Series: 75%–55%	Inches: 15–17

These values are for the full size range of this product. The special size range offered can vary from country to country. For detailed information on the sizes offered and the relevant parameters in your country, please refer to the table section.

Application: Transporters, Light Commercial Vehicles, Cargos and Modern Vans

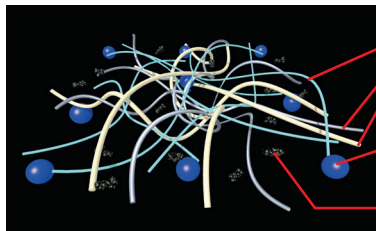
Benefits

- Constructed for mileage performance
- Strong and smooth drive on various road conditions, all year round
- Focus on Wet Performance

Features

- Remarkable Tread Design
- Compound for toughness
- Construction: Bead Flipper

Compound



Triple Polymer

Strong & tough polymers for tread life. Resistance to uneven wear, cut and chip.

Silica

Large amount of Silicas are used to support Wet Performance.

Carbon

Tread Pattern



Triple Wide & Deep Grooves

To enhance snow/water evacuation, for Snow and Wet Performance

Center Zig-Zag Groove

Creating edges to snow, crossing Wide Lugs creating shear force

Straight Grooves

For smooth water drainage



Square Shoulder Block

Wide Contact Area for cornering, preventing irregular wear by high rigidity

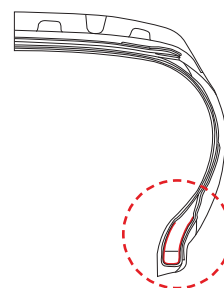
Tough Center Blocks

Large Blocks placed in the center, creating rigidity and large contact area with ground, preventing irregular wear

Snow Biting Sipes

Scratch snow for snow performance

Construction



Bead Flipper

For anti-burst

For driving stability

- Aims to prevent wear of bead & carcass in high load
 - Keeps bead filler from falling

Classic Car Tyres

YOKOHAMA A-008P

The A-008P a true Classic



EU Label Range

Fuel Efficiency Class	D
Wet Grip Class	B
External Rolling Noise Class and Measured Value (dB)	B 70
Series: 55% - 45%	Inches: 16

These values are for the full size range of this product. The special size range offered can vary from country to country. For detailed information on the sizes offered and the relevant parameters in your country, please refer to the table section.

A-008P Features

- Jointless nylon full cover
- Steel belt and steel reinforcement
- Dual layer tread compound
- Asymmetric pattern design



ADVAN HF^{Type D}

The Legendary ADVAN HF Type-D A008, Reborn



EU Label Range

Fuel Efficiency Class	D
Wet Grip Class	C-D
External Rolling Noise Class and Measured Value (dB)	A-B 68-70
Series: 70% - 45%	Inches: 13 - 15

These values are for the full size range of this product. The special size range offered can vary from country to country. For detailed information on the sizes offered and the relevant parameters in your country, please refer to the table section.

AD08S Features

- Asymmetric tread design resembles that of racing slick tyres
- High performance tread compound
- Polyester and cord body
- Twin steel belts, reinforced by a layer of nylon



GT.SPECIAL CLASSIC Y350

Reviving the Culture of Classic Cars



EU Label Range

Fuel Efficiency Class	D
Wet Grip Class	D
External Rolling Noise Class and Measured Value (dB)	A 67
Series: 80%	Inches: 10 - 15

These values are for the full size range of this product. The special size range offered can vary from country to country. For detailed information on the sizes offered and the relevant parameters in your country, please refer to the table section.

Y350 Features

- Classical tread pattern and side design of the predecessor
- Distinctive, original style
- Classic appearance with latest tyre technologies



A539

Spirit and Style for Classic Cars



EU Label Range

Fuel Efficiency Class	D
Wet Grip Class	C
External Rolling Noise Class and Measured Value (dB)	B 69
Series: 60% - 50%	Inches: 12 - 14

These values are for the full size range of this product. The special size range offered can vary from country to country. For detailed information on the sizes offered and the relevant parameters in your country, please refer to the table section.

A539 Features

- Signature design Pattern for classic cars
- Balanced comfort and performance in wet & dry
- Asymmetric tread pattern for stable cornering



Original Equipment



AUDI										BMW M											
Model	Tyre Description		Tyre Brand Name					C	Model	Tyre Description		Tyre Brand Name					C				
A6 (C7)	255/35R20 97Y	XL/RF	ADVAN Sport V103S AO	D	B	B	73	-	-	C1	M3	(F)285/30ZR20 (99Y)	XL/RF	ADVAN Sport V107E I ★	D	A	A	72	-	-	C1
	255/40R19 100Y	XL/RF	ADVAN Sport V103S AO	D	B	B	72	-	-	C1		(R)295/25ZR21 (96Y)	XL/RF	ADVAN Sport V107E ★	D	A	A	70	-	-	C1
A7 (C7)	265/35R20 99Y	XL/RF	ADVAN Sport V103S AOE	D	B	B	71	-	-	C1		(F)275/40ZR18 (103Y)	XL/RF	ADVAN Sport V107E ★	D	A	B	71	-	-	C1
	255/40R19 100Y	XL/RF	ADVAN Sport V103S AO	D	B	B	73	-	-	C1		(R)285/35ZR19 (103Y)	XL/RF	ADVAN Sport V107E ★	C	A	A	71	-	-	C1
	255/45R18 99Y		ADVAN Sport V103S AO	D	B	B	71	-	-	C1		M3 Touring	(F)285/30ZR20 (99Y)	XL	ADVAN Sport V107E I ★	D	A	A	72	-	-
S6 (C7)	235/55R17 99Y		ADVAN Sport V103S AO	D	B	B	71	-	-	C1		(R)295/25ZR21 (96Y)	XL	ADVAN Sport V107E ★	D	A	A	70	-	-	C1
	255/35R20 97Y	XL/RF	ADVAN Sport V103S AO	D	B	B	73	-	-	C1	M4	(F)285/30ZR20 (99Y)	XL/RF	ADVAN Sport V107E I ★	D	A	A	72	-	-	C1
S7 (C7)	255/40R19 100Y	XL/RF	ADVAN Sport V103S AO	D	B	B	72	-	-	C1	(R)295/25ZR21 (96Y)	XL/RF	ADVAN Sport V107E ★	D	A	A	70	-	-	C1	
	265/35R20 99Y	XL/RF	ADVAN Sport V103S AO	D	B	B	73	-	-	C1	(F)275/40ZR18 (103Y)	XL	ADVAN Sport V107E ★	D	A	B	71	-	-	C1	
S8 (D3)	255/45R19 100Y	XL/RF	ADVAN Sport V103S AO	D	B	B	72	-	-	C1	(R)285/35ZR19 (103Y)	XL/RF	ADVAN Sport V107E ★	C	A	A	71	-	-	C1	
	265/35R20 99Y	XL/RF	ADVAN Sport V103S	D	B	B	73	-	-	C1	M5	(F)275/40ZR19 (105Y)	XL/RF	ADVAN Sport V105 ★	D	A	B	72	-	-	C1
RS6 (C7)	275/35ZR20 (102Y)	XL/RF	ADVAN Sport V105D RO1	D	A	B	73	-	-	C1	(R)285/40ZR19 (107Y)	XL/RF	ADVAN Sport V105E ★	C	A	B	74	-	-	C1	
RS7 (C7)	275/35ZR20 (102Y)	XL/RF	ADVAN Sport V105D RO1	D	A	B	73	-	-	C1	CITROËN										
TTS (TT3)	255/30ZR20 (92Y)	XL/RF	ADVAN Sport V105 RO1	D	A	B	73	-	-	C1	Model	Tyre Description		Tyre Brand Name					C		
TT RS (TT3)	255/30ZR20 (92Y)	XL/RF	ADVAN Sport V105 RO1	D	A	B	73	-	-	C1	C4 Aircross	215/70R16 100H		GEOLANDAR G033	C	B	B	71	-	-	C1
Q7	275/45R20 110Y	XL	ADVAN Sport V103B AO	D	B	B	73	-	-	C1	FIAT										
	265/50R19 110Y	XL	ADVAN Sport V103B AO	D	B	B	73	-	-	C1	Model	Tyre Description		Tyre Brand Name					C		
BMW										124 Spider	195/50R16 84V		ADVAN Sport V105	D	C	B	71	-	-	C1	
Model	Tyre Description		Tyre Brand Name					C	HONDA												
7 series	245/50R19 105Y	XL	ADVAN Sport V107E ★	A	B	B	70	-	-	C1	Model	Tyre Description		Tyre Brand Name					C		
	(F)255/45R20 105Y	XL/RF	ADVAN Sport V107E ★ SF	A	A	A	67	-	-	C1	Accord	225/50R17 98V	RF	YOKOHAMA dB E70D	D	C	B	72	-	-	C1
	(R)285/40R20 108Y	XL/RF	ADVAN Sport V107E ★	A	B	A	69	-	-	C1	CR-Z	195/55R16 87V		ADVAN A10E	D	C	B	71	-	-	C1
3 series BEV	(F)225/50R18 99Y	XL/RF	ADVAN Sport V107E ★	A	B	A	69	-	-	C1	Honda e	(F)185/60R16 86H	RF	BluEarth-A AE50	C	C	B	68	-	-	C1
	(R)245/45R18 100Y	XL/RF	ADVAN Sport V107E ★	A	B	B	70	-	-	C1		(R)205/55R16 91V	RF	BluEarth-A AE50	C	C	B	71	-	-	C1
	(F)225/45R19 96Y	XL	ADVAN Sport V107E ★	A	B	A	69	-	-	C1	Insight	185/60R15 84H		BluEarth E50CA	C	C	B	69	-	-	C1
iX3	(R)245/40R19 98Y	XL/RF	ADVAN Sport V107E ★	A	B	A	69	-	-	C1		175/65R15 84T		YOKOHAMA S71B	C	C	B	70	-	-	C1
	245/50R19 105W	XL/RF	ADVAN Sport V107E ★	A	B	A	69	-	-	C1	Jazz	175/65R14 82T		ASPEC A349G	D	C	B	70	-	-	C1
	(F)245/45R20 103W	XL/RF	ADVAN Sport V107E ★	A	B	A	68	-	-	C1		175/65R15 84T		YOKOHAMA S71A	C	C	B	70	-	-	C1
X3	(R)275/40R20 106W	XL/RF	ADVAN Sport V107E ★	A	B	A	69	-	-	C1		185/55R16 87H	XL	BluEarth-A AE50	C	C	A	68	-	-	C1
	225/60R18 104W	XL/RF	ADVAN Sport V107D ★	A	A	B	72	-	-	C1		185/60R15 88H	XL	BluEarth-FE AE30	B	B	A	67	-	-	C1
X3 MPA	245/50R19 105W	XL	ADVAN Sport V105 ZPS ★ RSC	B	A	B	71	-	-	C1	ZR-V	225/55R18 98H		ADVAN dB V552	C	A	A	67	-	-	C1
	(F)245/45R20 103Y	XL	ADVAN Sport V105T ★	D	A	A	69	-	-	C1	INFINITI										
X4	(R)275/40R20 106Y	XL	ADVAN Sport V105E ★	C	A	B	71	-	-	C1	Model	Tyre Description		Tyre Brand Name					C		
	245/50R19 105W	XL	ADVAN Sport V105 ZPS ★ RSC	B	A	B	71	-	-	C1	Q30/QX30	235/50R18 97V		C.drive2 AC02A	C	C	B	71	-	-	C1
X4 MPA	(F)245/45R20 103Y	XL	ADVAN Sport V105T ★	D	A	A	69	-	-	C1	ISUZU										
	(R)275/40R20 106Y	XL	ADVAN Sport V105E ★	C	A	B	71	-	-	C1	Model	Tyre Description		Tyre Brand Name					C		
X5 MPA	(F)275/40R21 107Y	XL/RF	ADVAN Sport V107E ★ SF	D	A	A	69	-	-	C1	D-Max	205R16C 110/108S RHD		GEOLANDAR G97A	C	B	B	70	-	-	C2
	(R)315/35R21 111Y	XL/RF	ADVAN Sport V107E ★ SF	C	A	A	70	-	-	C1	JEEP										
X6 MPA	(F)275/40R21 107Y	XL/RF	ADVAN Sport V107E ★ SF	D	A	A	69	-	-	C1	Model	Tyre Description		Tyre Brand Name					C		
	(R)315/35R21 111Y	XL/RF	ADVAN Sport V107E ★ SF	C	A	A	70	-	-	C1	Cherokee	245/65R17 107H		GEOLANDAR SUV G055	C	C	B	71	-	-	C1
X7	(F)HL275/35R23 108Y	XL/RF	ADVAN Sport V107E ★	D	A	A	70	-	-	C1											
	(R)HL315/30R23 111Y	XL/RF	ADVAN Sport V107E ★	D	A	A	71	-	-	C1											
XM	(F)275/45R21 110Y	XL/RF	ADVAN Sport V107E ★	D	A	A	69	-	-	C1											
	(R)315/40R21 115Y	XL/RF	ADVAN Sport V107E ★	D	B	A	70	-	-	C1											
	(F)275/40R22 107Y	XL/RF	ADVAN Sport V107E ★	C	A	A	69	-	-	C1											
	(R)315/35R22 111Y	XL/RF	ADVAN Sport V107E ★	C	A	A	72	-	-	C1											
	(F)275/40R22 107Y	XL	ADVAN Sport V107E I ★	D	A	A	70	-	-	C1											
(R)315/35R22 111Y	XL/RF	ADVAN Sport V107E I ★	D	B	A	71	-	-	C1												

ADVAN V61A

BluEarth-GT AE51B

GEOLANDAR G91F


For information about the EU Tyre Label, Tyre labelling data, Original Equipment and further technical details of our OE Tyres, please see the OE section beneath or refer to the YOKOHAMA website www.yokohama.eu

LEXUS

Model	Tyre Description	Tyre Brand Name		C
CT	215/45R17 87W RF	YOKOHAMA dB E70J	D B B 70 - -	C1
	205/55R16 91V	ADVAN A460J	D C B 71 - -	C1
	195/65R15 91H	YOKOHAMA dB E70J	D C B 70 - -	C1
ES	215/55R17 93V	ASPEC A349G	D C B 70 - -	C1
	215/55R17 94V	BluEarth GT AE51B LHD/RHD	C C A 67 - -	C1
GS	225/50R17 94W	ADVAN A10F	D C B 71 - -	C1
		ADVAN A10E	D C B 71 - -	C1
IS	225/45R17 91W	BluEarth E51A/B	D C B 70 - -	C1
LX	285/60R18 116V	GEOLANDAR G94BV	C C B 73 - -	C1
	265/65R18 114V	GEOLANDAR A/T G031	C C B 72 - -	C1
	265/50R22 112V XL/RF	GEOLANDAR X-CV G057B	B C B 72 - -	C1
NX	225/60R18 100H	BluEarth E51B	D C B 70 - -	C1
		BluEarth E51A	D C B 70 - -	C1
	235/60R18 103H	BluEarth-XT ZPS AE61E	B C B 69 - -	C1
		BluEarth-XT AE61E	B C B 69 - -	C1
225/65R17 102H	GEOLANDAR G91AV	C D B 71 - -	C1	
RX	235/60R19 103V	ADVAN V61F	B C A 67 - -	C1
RZ	(F)235/60R18 103H	ADVAN V61A	A B A 68 - -	C1
	(R)255/55R18 105V	ADVAN V61A	B B B 70 - -	C1

LOTUS

Model	Tyre Description	Tyre Brand Name		C
Elise (Sport/ Sport 220/ Sprint/ Sprint 220)	(F)195/50R16 84W	ADVAN Sport V105 OE	D C B 71 - -	C1
	(R)225/45R17 91W	ADVAN Sport V105 MO	D B B 71 - -	C1
Elise (Cup 250)	(F)195/50R16 88W XL/RF	ADVAN A052	D B B 71 - -	C1
	(R)225/45R17 94W XL/RF	ADVAN A052	D A B 71 - -	C1

MAZDA

Model	Tyre Description	Tyre Brand Name		C
CX-30	215/65R16 98H	BluEarth-GT AE51E LHD	B B A 68 - -	C1
CX-5	225/65R17 102V	GEOLANDAR G98FV	C B B 70 - -	C1
		GEOLANDAR G98GV	C B B 70 - -	C1
CX-60	235/60R18 103V	ADVAN V61B	B B A 68 - -	C1
	235/60R18 107V XL	ADVAN V61E	B B B 70 - -	C1
CX-70	265/55R19 109V	ADVAN V61G	B B A 69 - -	C1
CX-8	225/65R17 102H	GEOLANDAR G98GV	C B B 70 - -	C1
CX-9	P255/60R18 107H RF	GEOLANDAR H/T G056B	C C B 72 - -	C1
CX-90	265/55R19 109V	ADVAN V61G	B B A 69 - -	C1

- AO = Audi Original Designation
- AOE = Audi Original Extended (Runflat Tyre Characteristics)
- RO1 = Audi quattro specification
- ★ = BMW specification
- I ★ = BMW specification
- MO = Mercedes Original
- MOE = Mercedes Original Extended (Runflat Tyre Characteristics)
- MO1 = Mercedes-AMG Original
- OE = Original Equipment
- SF = SILENTFOAM: This polyurethane foam aims to reduce tyre cavity resonance
- LHD = Left Hand Drive
- RHD = Right Hand Drive
- RSC = Runflat System Component
- RF = Reinforced
- XL = Extra Load
- ZPS = Zero Pressure System (Runflat Tyre Characteristics)
- (F) = Front Axle
- (R) = Rear Axle
- = Tyre does not bear this pictogram

See section "Technical Information" about how to read the Tyre Code.

For information about the start and end date of production of these tyres, information about the tyre type identifier and further technical aspects, please refer to the official product information sheet, which can be provided to you by your tyre dealer.
A link to the public part of the European product database for Energy Labelling (EPREL), where you can access the product information sheet and the EU tyre label, is also provided via the YOKOHAMA website (www.yokohama.eu).

MAZDA

(2/2)

Model	Tyre Description	Tyre Brand Name		C
Mazda 2	185/60R14 82H	ASPEC A300	C B B 69 - -	C1
	185/65R15 88T	BluEarth-GT AE51D	B B A 67 - -	C1
Mazda 3	195/65R15 91H	ASPEC A349A	D B B 70 - -	C1
	205/60R16 92V	BluEarth-GT AE51E LHD/RHD	B C A 67 - -	C1
MX-5	195/50R16 84V	ADVAN Sport V105	D C B 71 - -	C1

MERCEDES-BENZ

(1/2)

Model	Tyre Description	Tyre Brand Name		C	
A-Class (W176)	225/45R17 91W	ADVAN Sport V105 MO	D B B 71 - -	C1	
	225/45R17 91V	C.drive2 AC02A MO	D C B 70 - -	C1	
	205/55R16 91V	C.drive2 AC02A MO	C C B 70 - -	C1	
	205/55R16 91H	C.drive2 AC02A MO	C C B 70 - -	C1	
B-Class (W246)	225/45R17 91W	ADVAN Sport V105 MO	D B B 71 - -	C1	
	225/45R17 91V	C.drive2 AC02A MO	D C B 70 - -	C1	
	205/55R16 91V	C.drive2 AC02A MO	C C B 70 - -	C1	
	205/55R16 91H	C.drive2 AC02A MO	C C B 70 - -	C1	
C-Class (BR205)	225/50R17 94W	ADVAN Sport V105 MO	B B B 71 - -	C1	
	(F)225/45R18 95Y XL/RF	ADVAN Sport V105 MO	C B B 72 - -	C1	
	(R)245/40R18 97Y XL/RF	ADVAN Sport V105 MO	C B B 72 - -	C1	
C-Class (BR204)	(R)245/40R17 91W	ADVAN Sport V105 MO	D A B 71 - -	C1	
		ADVAN Sport V103S MO	D B B 71 - -	C1	
		ADVAN Sport V105 MO	D B B 71 - -	C1	
	205/55R16 91W	ADVAN Sport V105 MO	C B B 71 - -	C1	
	(F)205/55R16 91W	ADVAN Sport V105 MO	C B B 71 - -	C1	
	(R)225/50R16 92W	ADVAN Sport V105 MO	D B B 71 - -	C1	
		ADVAN Sport V103S MO	D B B 71 - -	C1	
		ADVAN Sport V105 MO	C B B 71 - -	C1	
	CLA (C117)	225/45R17 91W	ADVAN Sport V105 MO	D B B 71 - -	C1
	CLS (C218)	(R)285/35R18 97Y	ADVAN Sport V105 MO	D A B 73 - -	C1
255/40R18 99Y XL/RF		ADVAN Sport V105 MO	D A B 73 - -	C1	
CLS-Shooting Brake (X218)	(R)285/35R18 97Y RF	ADVAN Sport V105 MO	D A B 73 - -	C1	
	255/40R18 99Y XL/RF	ADVAN Sport V105 MO	D A B 73 - -	C1	
G-Class (BR463)	265/60R18 110V	GEOLANDAR H/T G038G	D D B 70 - -	C1	
		C.drive2 AC02A MO	C C B 71 - -	C1	
GLA (X156)	235/50R18 97V	C.drive2 AC02A ZPS MOE	C C B 71 - -	C1	
		C.drive2 AC02A ZPS MOE	C C B 71 - -	C1	
GLC (X253)	235/55R19 101V RF	ADVAN Sport V105 MO	C B B 71 - -	C1	
	235/60R18 103V RF	ADVAN Sport V105 MO	B B B 71 - -	C1	
S-Class (BR222)	245/50R18 100W	ADVAN Sport V105C MO	B A B 71 - -	C1	


Fuel Efficiency Class

The fuel efficiency class ranges from A (most efficient) to E (least efficient). A top class tyre has less rolling resistance and therefore requires less energy to move the vehicle. This translates into lower energy costs (fossil fuels or electricity).


Wet Grip Class

The wet grip describes a tyre's performance under wet conditions and its classes ranges as well from A (shorter braking distance on wet asphalt) to E (longest).


External Rolling Noise Class and Measured Value (dB)

The external rolling noise class ranges from A (less noise outside the vehicle) to C (highest noise). The external rolling noise, caused by tyres, is measured in decibels. This noise is different from the "cavity noise", which is the noise transmitted from the rims to the interior of the car.

Under the new regulation, in addition to the previous tyre label, there are also options for including an icon relating to grip on icy conditions and/or severe snow conditions in the bottom part of the tyre label (next to the external rolling noise pictogram) for tyres which satisfy the minimum snow grip index values or the relevant minimum ice grip index values.



Tyres suitable for severe snow conditions bear the snow grip pictogram ("3 Peak Mountain Snowflake") or "alpine" symbol that is also present on the sidewall of such tyres. Nordic winter tyres (tyre class C1) for use on iced surfaces will feature a symbol (ice grip pictogram) that represents an ice stalagmite.

Original Equipment



MERCEDES-BENZ (2/2)				
Model	Tyre Description	Tyre Brand Name		
S-Class Coupé (C217)	245/50R18 100W	ADVAN Sport V105C MO	B	A B 71 - - C1
	(R)285/30ZR19 (98Y) XL/RF	ADVAN Sport V105 MO	D	A B 74 - - C1
SL (R231)	255/35ZR19 (96Y) XL/RF	ADVAN Sport V105 MO	D	A B 73 - - C1
	(R)285/35R18 97Y	ADVAN Sport V105+ MO	D	A B 73 - - C1
SLC (R172)	225/45R17 91W	ADVAN Sport V105 MO	D	B B 71 - - C1
	(R)245/40R17 91W	ADVAN Sport V105 MO	D	A B 71 - - C1
	225/50R16 92W	ADVAN Sport V105 MO	D	B B 71 - - C1
	225/50R16 92V	ADVAN Sport V105 MO	D	B B 71 - - C1
	205/55R16 91W	ADVAN Sport V105 MO	C	B B 71 - - C1
205/55R16 91V	ADVAN Sport V105 MO	C	B B 71 - - C1	

MERCEDES-AMG				
Model	Tyre Description	Tyre Brand Name		
CLS (C257)	(F)245/35ZR20 (95Y) XL	ADVAN Sport V105 MO	D	A B 72 - - C1
	(R)275/30ZR20 (97Y) XL	ADVAN Sport V105 MO	D	A B 73 - - C1
	(F)245/40ZR19 (98Y) XL	ADVAN Sport V105 MO	D	A B 72 - - C1
	(R)275/35ZR19 (100Y) XL	ADVAN Sport V105 MO	D	A B 73 - - C1
E-Class (BR213)	(F)245/35ZR20 (95Y) XL/RF	ADVAN Sport V105 MO	D	A B 72 - - C1
	(R)275/30ZR20 (97Y) XL/RF	ADVAN Sport V105 MO	D	A B 73 - - C1
	(F)245/40ZR19 (98Y) XL/RF	ADVAN Sport V105 MO	D	A B 72 - - C1
	(R)275/35ZR19 (100Y) XL/RF	ADVAN Sport V105 MO	D	A B 73 - - C1
EQS (BR297)	275/35R22 104Y XL/RF	ADVAN Sport V107C MO1 SF	C	A B 72 - - C1
G-Class (W463)	275/50R20 113W RF	ADVAN S.T. V802 MO	D	B B 72 - - C1
	285/55R18 113V	AVS S/T type-1 V801	D	D B 74 - - C1
GLA (H247)	235/50ZR19 99Y	ADVAN Sport V107F MO1	C	A B 70 - - C1
	255/35ZR21 98Y XL/RF	ADVAN Sport V107F MO1	D	A A 70 - - C1
GLB (X247)	255/35ZR21 98Y XL/RF	ADVAN Sport V107F MO1	D	A A 70 - - C1
GLE (W167)	(F)285/40ZR22 110Y XL/RF	ADVAN Sport V107C MO1	C	A A 71 - - C1
	(R)325/35ZR22 114Y XL/RF	ADVAN Sport V107D MO1	C	A A 72 - - C1
	275/50ZR20 113Y XL/RF	ADVAN Sport V107D MO1	C	A B 72 - - C1
GLS (X167)	(F)285/45ZR22 114Y XL/RF	ADVAN Sport V107C MO1	C	A A 71 - - C1
	(R)325/40ZR22 114Y	ADVAN Sport V107D MO1	C	A B 72 - - C1
ML (W164)	295/40ZR20 106Y RF	ADVAN Sport V103A MO	D	B B 74 - - C1

MITSUBISHI (1/2)				
Model	Tyre Description	Tyre Brand Name		
ASX	215/60R17 96H	ASPEC A349A	D	C B 71 - - C1
	215/65R16 98H	ASPEC A349A	C	C B 71 - - C1
Eclipse Cross	225/55R18 98H	BluEarth E70BZ	D	B B 70 - - C1
Eclipse Cross PHEV	225/55R18 98H	BluEarth E70CZ	C	B B 70 - - C1
Grandis	215/55R17 94V	ASPEC A349A	D	C B 71 - - C1
Lancer	215/45R18 89W	ADVAN A10A	D	C B 71 - - C1
	205/60R16 92H	ADVAN A460L	D	C B 71 - - C1
Space Star	175/55R15 77V	BluEarth A34LZ	D	B B 69 - - C1
	165/65R14 79S	BluEarth A34LZ	C	C B 68 - - C1

MITSUBISHI (2/2)				
Model	Tyre Description	Tyre Brand Name		
Outlander	235/60R18 103H	GEOLANDAR X-CV G99B	B	B B 70 - - C1
	215/70R16 100H	GEOLANDAR G033	C	B B 71 - - C1
		GEOLANDAR G033V	C	B B 71 - - C1
Outlander PHEV	225/55R18 98H	BluEarth E70BZ	D	B B 70 - - C1
Pajero	265/65R17 112H	GEOLANDAR G902	D	C B 72 - - C1
	265/70R16 112S	GEOLANDAR G039	C	C B 72 - - C1
	235/80R16 109S	GEOLANDAR G039	D	C B 70 - - C1
Pajero Sport	265/70R16 112S	GEOLANDAR G94CV	C	C B 72 - - C1

NISSAN				
Model	Tyre Description	Tyre Brand Name		
JUKE	215/55R17 94V	YOKOHAMA dB E70N	D	B B 70 - - C1
	205/60R16 92H	YOKOHAMA dB E70L	D	B B 70 - - C1
Murano	235/55R20 102V RF	ADVAN Sport V103B	D	B B 71 - - C1
X-Trail	225/65R17 102H	GEOLANDAR G91AV	C	D B 71 - - C1
		GEOLANDAR G98EV	C	C B 70 - - C1
370 Z	235/60R18 103H	GEOLANDAR X-CV G99A	B	B B 69 - - C1
	(F)225/50R18 95W	ADVAN Sport V103E LHD/RHD	D	B B 71 - - C1
	(R)245/45R18 96W	ADVAN Sport V103F LHD/RHD	D	B B 71 - - C1

PEUGEOT				
Model	Tyre Description	Tyre Brand Name		
4008	215/70R16 100H	GEOLANDAR G033	C	B B 71 - - C1

PORSCHE (1/2)				
Model	Tyre Description	Tyre Brand Name		
718 Boxster	(F)235/40ZR19 (92Y)	ADVAN Sport V105 N0	D	A B 71 - - C1
	(R)265/40ZR19 (98Y)	ADVAN Sport V105W N0	D	A B 72 - - C1
718 Cayman	(F)235/40ZR19 (92Y)	ADVAN Sport V105 N0	D	A B 71 - - C1
	(R)265/40ZR19 (98Y)	ADVAN Sport V105W N0	D	A B 72 - - C1
911 Carrera (991 II)	(F)235/40ZR19 (92Y)	ADVAN Sport V105 N0	D	A B 71 - - C1
	(R)295/35ZR19 (100Y)	ADVAN Sport V105E N0	D	A B 74 - - C1
911 Carrera 4 (997)	(R)295/35ZR18 (99Y)	ADVAN Sport V103S N-1	D	B B 74 - - C1
Panamera (G1 II)	(F)255/40ZR20 (101Y) XL/RF	ADVAN Sport V105 N-0	D	A B 73 - - C1
	(R)295/35ZR20 (105Y) XL/RF	ADVAN Sport V105W N-0	D	A B 74 - - C1
Panamera (G2)	(F)275/40ZR20 (106Y) XL/RF	ADVAN Sport V105 N0	C	A A 70 - - C1
	(R)315/35ZR20 (110Y) XL/RF	ADVAN Sport V105W N0	C	A A 70 - - C1
Cayenne (E1)	275/40R20 106Y XL	ADVAN Sport V103B N-0	D	B B 73 - - C1
	275/45R19 108Y XL	ADVAN Sport V103B N-0	D	B B 73 - - C1
Cayenne (E1 II)	295/35R21 107Y XL	ADVAN Sport V103B N-0	D	B B 74 - - C1
	275/40R20 106Y XL	ADVAN Sport V103B N-0	D	B B 73 - - C1
	275/45R19 108Y XL	ADVAN Sport V103B N-0	D	B B 73 - - C1
Cayenne (E2)	295/35R21 107Y XL	ADVAN Sport V103B N-1	D	B B 74 - - C1
	275/45R20 110Y XL	ADVAN Sport V103H N-0	D	B B 73 - - C1
Cayenne (E2 II)	295/35R21 107Y XL	ADVAN Sport V105T N-2	D	A B 74 - - C1
	275/45R20 110Y XL	ADVAN Sport V103H N-0	D	B B 73 - - C1

ADVAN V61A

BluEarth-GT AE51B

GEOLANDAR G91F


For information about the EU Tyre Label, Tyre labelling data, Original Equipment and further technical details of our OE Tyres, please see the OE section beneath or refer to the YOKOHAMA website www.yokohama.eu

PORSCHE

(1/2)

Model	Tyre Description	Tyre Brand Name		C
Cayenne (E3PA)	(F)285/40ZR22 (110Y) XL/RF	ADVAN Sport V107D NC0	C B A 69 - -	C1
	(R)315/35ZR22 (111Y) XL/RF	ADVAN Sport V107D NC0	C A A 72 - -	C1
Cayenne (E3)	(F)285/35ZR22 (106Y) XL	ADVAN Sport V105 N0	C A B 74 - -	C1
	(R)315/30ZR22 (107Y) XL	ADVAN Sport V105E N0	C A B 73 - -	C1

SUZUKI

Model	Tyre Description	Tyre Brand Name		C
Swift	175/65R15 84H	BluEarth AE01J	B C B 69 - -	C1
		BluEarth AE01J	C C B 69 - -	C1
Swift Sport	195/50R16 84V	ADVAN A13C	D C A 66 - -	C1
Across	235/55R19 101V	AVID GT S35	B C B 70 - -	C1

RENAULT

Model	Tyre Description	Tyre Brand Name		C
Twingo GT	(F)185/45R17 78H RF	BluEarth-A AE50	D C B 68 - -	C1
	(R)205/40R17 80H	BluEarth-A AE50	D C A 67 - -	C1

TOYOTA

Model	Tyre Description	Tyre Brand Name		C
Auris/Corolla	205/55R16 91V	ADVAN A460J	D C B 71 - -	C1
	195/65R15 91H	ASPEC A349G	D C B 70 - -	C1
bZ4X	235/60R18 103H	ADVAN V61A	A B A 68 - -	C1
Camry	215/55R17 93V	YOKOHAMA dB E70B	D C B 70 - -	C1
	215/60R16 95V	YOKOHAMA dB E70B	D B B 70 - -	C1
	215/55R17 94V	BluEarth GT AE51B	C C A 67 - -	C1
	205/65R16 95H	BluEarth GT AE51A	C C A 67 - -	C1
GT86	205/55R16 91V	YOKOHAMA dB E70JC	D C B 70 - -	C1
Hiace	235/65R16C 115/113T	BluEarth-Van RY55A	C B A 69 - -	C2
Land Cruiser 200	285/60R18 116V	GEOLANDAR G94BV	C C B 73 - -	C1
	285/65R17 116H	GEOLANDAR G94B	C C B 73 - -	C1
Land Cruiser 300	265/65R18 114V	GEOLANDAR A/T G031	C C B 72 - -	C1
Prius	195/60R17 90H	BluEarth-FE AE30D	A C A 67 - -	C1
	195/50R19 88H	BluEarth-GT AE51J	C A B 71 - -	C1
	215/45R17 87W	BluEarth E70WZ	D C B 70 - -	C1
		BluEarth GT AE51G	C C A 68 - -	C1
Prius+	205/60R16 92V	ADVAN dB V551V	C B B 71 - -	C1
RAV 4	235/55R18 100H	GEOLANDAR G91AV	C D B 71 - -	C1
	225/65R17 102H	GEOLANDAR G91AV	C D B 71 - -	C1
	235/55R19 101V	AVID GT S35	B C B 70 - -	C1
Urban Cruiser	195/60R16 89H	YOKOHAMA dB E70E	C C B 70 - -	C1
Yaris	205/45R17 84W	YOKOHAMA dB E70D	D C B 70 - -	C1
	195/50R16 84V	YOKOHAMA dB E70C	D C B 70 - -	C1
Hilux		GEOLANDAR A/T G94CV	B B B 72 - -	C1
		GEOLANDAR A/T G94DV	B B B 72 - -	C1

SMART

Model	Tyre Description	Tyre Brand Name		C
fortwo BRABUS (BR453)	(F)185/50R16 81H RF	BluEarth-A AE50	D C B 68 - -	C1
	(R)205/40R17 80H RF	BluEarth-A AE50	D C A 67 - -	C1
fortwo BRABUS (BR451)	(F)175/50R16 77T RF	S.drive AS01 MO	D C B 69 - -	C1
	(R)225/35R17 86Y XL	S.drive AS01 OE	D C B 72 - -	C1
forfour BRABUS (BR453)	(F)185/45R17 78H RF	BluEarth-A AE50	D C B 68 - -	C1
	(R)205/40R17 80H RF	BluEarth-A AE50	D C A 67 - -	C1

SUBARU

Model	Tyre Description	Tyre Brand Name		C
BR-Z	205/55R16 91V	YOKOHAMA dB E70JC	D C B 70 - -	C1
Crosstrek	225/60R17 99H	GEOLANDAR G91L	B B B 70 - -	C1
Forester	215/55R17 94V	GEOLANDAR G900A	D C B 71 - -	C1
	225/55R17 97V	GEOLANDAR G95A	C C B 71 - -	C1
	225/60R17 99V	GEOLANDAR G91F	B C B 71 - -	C1
	215/60R16 95V	GEOLANDAR G900	D C B 71 - -	C1
Impreza	XL/RF 225/40R18 92W	ADVAN Sport V105G LHD	D B B 72 - -	C1
	XL/RF 225/40R18 92W	ADVAN Sport V105F RHD	D B B 72 - -	C1
	205/50R17 89V	ADVAN A10E	D C B 71 - -	C1
	205/55R16 89V	ASPEC A349A	C C B 71 - -	C1
	205/55R16 91V	YOKOHAMA dB E70JC	D C B 70 - -	C1
Legacy	215/50R17 91V	ADVAN A10E	C D B 71 - -	C1
Outback	225/55R18 98V	YOKOHAMA dB E70B	D C B 70 - -	C1
	215/55R17 94V	GEOLANDAR G900A	D C B 71 - -	C1
	225/60R17 99V	GEOLANDAR G95A	C C B 71 - -	C1
	225/65R17 102H	GEOLANDAR G98C	B C B 71 - -	C1
Solterra	235/60R18 103H	ADVAN V61A	A B A 68 - -	C1
WRX (STI)	245/35R19 89W	ADVAN Sport V105G	D B B 70 - -	C1
XV	225/55R17 97V	GEOLANDAR G95A	C C B 71 - -	C1
	225/60R17 99H	BluEarth E70GZ	B C B 70 - -	C1

VOLKSWAGEN

Model	Tyre Description	Tyre Brand Name		C
Touareg	275/40R20 106Y XL	ADVAN Sport V103B N-0	D B B 73 - -	C1
	275/45R19 108Y XL	ADVAN Sport V103B N-0	D B B 73 - -	C1

- MO = Mercedes Original
- MO1 = Mercedes-AMG Original
- N0 = Porsche specification
- N-0 = Porsche specification
- N-1 = Porsche specification
- N-2 = Porsche specification
- NC0 = Porsche specification
- OE = Original Equipment
- SF = SILENTFOAM: This polyurethane foam aims to reduce tyre cavity resonance
- LHD = Left Hand Drive
- RHD = Right Hand Drive
- XL = Extra Load
- RF = Reinforced
- (F) = Front Axle
- (R) = Rear Axle
- = Tyre does not bear this pictogram

See section "Technical Information" about how to read the Tyre Code.

For information about the start and end date of production of these tyres, information about the tyre type identifier and further technical aspects, please refer to the official product information sheet, which can be provided to you by your tyre dealer.
A link to the public part of the European product database for Energy Labelling (EPREL), where you can access the product information sheet and the EU tyre label, is also provided via the YOKOHAMA website (www.yokohama.eu).


Fuel Efficiency Class

The fuel efficiency class ranges from A (most efficient) to E (least efficient). A top class tyre has less rolling resistance and therefore requires less energy to move the vehicle. This translates into lower energy costs (fossil fuels or electricity).


Wet Grip Class

The wet grip describes a tyre's performance under wet conditions and its classes ranges as well from A (shorter braking distance on wet asphalt) to E (longest).


External Rolling Noise Class and Measured Value (dB)

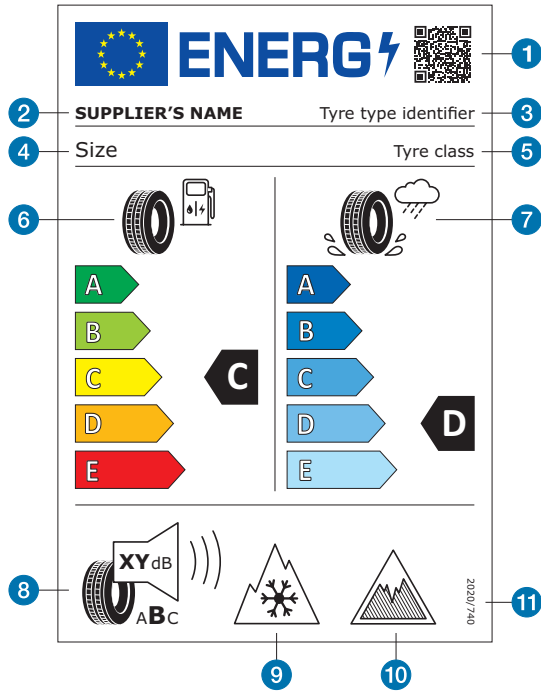
The external rolling noise class ranges from A (less noise outside the vehicle) to C (highest noise). The external rolling noise, caused by tyres, is measured in decibels. This noise is different from the "cavity noise", which is the noise transmitted from the rims to the interior of the car.

Under the new regulation, in addition to the previous tyre label, there are also options for including an icon relating to grip on icy conditions and/or severe snow conditions in the bottom part of the tyre label (next to the external rolling noise pictogram) for tyres which satisfy the minimum snow grip index values or the relevant minimum ice grip index values.



Tyres suitable for severe snow conditions bear the snow grip pictogram ("3 Peak Mountain Snowflake") or "alpine" symbol that is also present on the sidewall of such tyres. Nordic winter tyres (tyre class C1) for use on iced surfaces will feature a symbol (ice grip pictogram) that represents an ice stalagmite.

EU Tyre Label



Since 2012 the EU Tyre Energy Label provides a clear and common classification of tyre performance for rolling resistance, braking on wet surfaces and external noise. The labels help consumers make informed decisions when they are buying tyres as they can easily set their priority choice based on the parameters.

Regulation (EC) No 1222/2009 first introduced the obligation of placing car and van tyres on the EU market with a sticker showing the label. That regulation was repealed and replaced by Regulation (EU) 2020/740 with start of application on 1 May 2021. It established a framework for the provision of harmonised information on tyre parameters through labelling to allow end-users to make an informed decision when purchasing tyres, for the purpose of increasing economic and environmental efficiency of road transport by promoting fuel-efficient, safe tyres with low noise levels.

Tyres are no longer allowed in classes F and G for rolling resistance and for wet grip, which is why the new scale has only 5 classes (A to E). The new energy symbols better suggest that the fuel efficiency is applicable to both internal combustion vehicles and to electric ones. In the bottom part, the external rolling noise class is always indicated, including the measured value of external noise level in decibels.

- | | | |
|---|---|---|
| 1 QR Code | 5 Tyre class: i.e. C1, C2 or C3 | 6 External rolling noise pictogram, value (expressed in dB and rounded to the nearest integer) and performance class |
| 2 Trade name or trademark of the supplier | 6 Fuel efficiency pictogram, scale and performance class | 9 Snow grip pictogram |
| 3 Tyre type identifier = Article number in case of YOKOHAMA | 7 Wet grip pictogram, scale and performance class | 10 Ice grip pictogram (C1 tyres only) |
| 4 Tyre size designation, load capacity index and speed category symbol | | 11 The serial number of this Regulation: "2020/740" |



Fuel Efficiency Class

The fuel efficiency class ranges from A (most efficient) to E (least efficient). A top class tyre has less rolling resistance and therefore requires less energy to move the vehicle. This translates into lower energy costs (fossil fuels or electricity).



Wet Grip Class

The wet grip describes a tyre's performance under wet conditions and its classes ranges as well from A (shorter braking distance on wet asphalt) to E (longest).



External Rolling Noise Class and Measured Value (dB)

The external rolling noise class ranges from A (less noise outside the vehicle) to C (highest noise). The external rolling noise, caused by tyres, is measured in decibels. This noise is different from the "cavity noise", which is the noise transmitted from the rims to the interior of the car.

Under the new regulation, in addition to the previous tyre label, there are also options for including an icon relating to grip on icy conditions and/or severe snow conditions in the bottom part of the tyre label (next to the external rolling noise pictogram) for tyres which satisfy the minimum snow grip index values or the relevant minimum ice grip index values.



Tyres suitable for severe snow conditions bear the snow grip pictogram ("3 Peak Mountain Snowflake") or "alpine" symbol that is also present on the sidewall of such tyres. Nordic winter tyres (tyre class C1) for use on iced surfaces will feature a symbol (ice grip pictogram) that represents an ice stalagmite.

The QR code, to read with a smartphone or other suitable reader, is intended to provide this and additional information for each individual tyre type identifier via a link to the public part of the new European product database for Energy Labelling (EPREL). A link to this database is also provided via the YOKOHAMA website (www.yokohama.eu).

You can also get the information of the database in printed form from your tyre dealer.

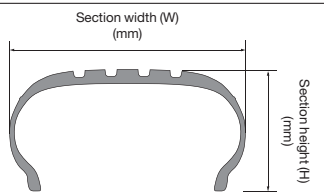
Other components of the label are the trade name or the trade mark of the supplier, the tyre type identifier, the tyre size designation, the load-capacity index and the speed category symbol, the tyre class and furthermore the serial number of the regulation (in the bottom part of the tyre label).

Technical Information / For Your Comfort & Safety

Aspect ratio

The aspect ratio is the ratio of a tyre's section height (H) to its section width (W).

$$\text{Aspect ratio (\%)} = \frac{H}{W} \times 100$$



Speed category symbol

The speed symbol refers to the maximum speed capabilities of the tyre. It is only valid for tyres that are properly inflated and loaded within their assigned load index.

Speed category symbol	Speed (km/h)
N	140
P	150
Q	160
R	170
S	180
T	190
H	210
V	240
W	270
Y	300
(Y)	over 300

Load-capacity index

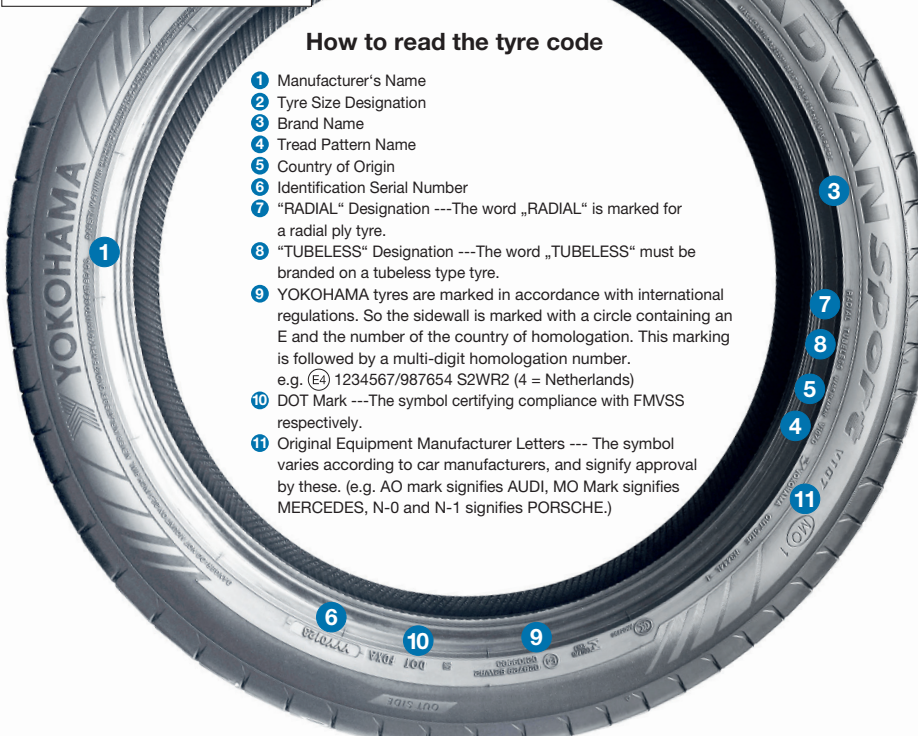
The load index is the maximum load-carrying capacity of a tyre under a specific condition.

LI	kg	LI	kg	LI	kg
61	257	81	462	101	825
62	265	82	475	102	850
63	272	83	487	103	875
64	280	84	500	104	900
65	290	85	515	105	925
66	300	86	530	106	950
67	307	87	545	107	975
68	315	88	560	108	1000
69	325	89	580	109	1030
70	335	90	600	110	1060
71	345	91	615	111	1090
72	355	92	630	112	1120
73	365	93	650	113	1150
74	375	94	670	114	1180
75	387	95	690	115	1215
76	400	96	710	116	1250
77	412	97	730	117	1285
78	425	98	750	118	1320
79	437	99	775	119	1360
80	450	100	800	120	1400
				121	1450
				122	1500
				123	1550

Example of ISO notation of radial tyre

325/35ZR22 114Y

- ① 325: Nominal section width (mm)
- ② 35: Aspect ratio (%)
- ③ ZR: Speed category (over 240 km/h) and construction code (Radial)
- ④ 22: Nominal rim diameter (inch)
- ⑤ 114: Load-capacity index (1180 kg)
- ⑥ Y: Speed category symbol (300 km/h)



How to read the tyre code

- 1 Manufacturer's Name
- 2 Tyre Size Designation
- 3 Brand Name
- 4 Tread Pattern Name
- 5 Country of Origin
- 6 Identification Serial Number
- 7 "RADIAL" Designation ---The word „RADIAL“ is marked for a radial ply tyre.
- 8 "TUBELESS" Designation ---The word „TUBELESS“ must be branded on a tubeless type tyre.
- 9 YOKOHAMA tyres are marked in accordance with international regulations. So the sidewall is marked with a circle containing an E and the number of the country of homologation. This marking is followed by a multi-digit homologation number. e.g. (E4) 1234567/987654 S2WR2 (4 = Netherlands)
- 10 DOT Mark ---The symbol certifying compliance with FMVSS respectively.
- 11 Original Equipment Manufacturer Letters --- The symbol varies according to car manufacturers, and signify approval by these. (e.g. AO mark signifies AUDI, MO Mark signifies MERCEDES, N-0 and N-1 signifies PORSCHE.)

Reinforced (Extra Load) Indication

Passenger car tyres designed for loads and inflation pressures higher than the standard version.

Tyre rotation

Tyre rotation is the regular practice of changing the position of each tyre on the car to minimise abnormal (or uneven) tread wear, which may cause:

1. Abnormal vibration ("shimmy")
2. Tyre noise
3. Decreased riding comfort
4. Shorter tyre life

Note: We recommend that you rotate your tyres immediately if you recognise any of the above-mentioned conditions (especially on your front tyres).

Tyres suitable for severe snow conditions bear the snow grip pictogram ("3 Peak Mountain Snowflake") or "alpine" symbol that is also present on the sidewall of such tyres. Nordic winter tyres (tyre class C1) for use on iced surfaces will feature a symbol (ice grip pictogram) that represents an ice stalagmite.

- Never mount a tyre on a rim that is damaged or which has been repaired by welding or brazing.
- Never inflate beyond 275 kPa (2.75 bar, 40 psi) to seat beads.
- Tyre inflation should be done in a safety cage.
- Do not mix different tyre size designations or constructions on the same axle, except for limited use of temporary spare tyres.
- Outer diameter of wheel should be the same as inner diameter of tyre.
- Make sure to follow instructions in the car owner's manual or on the vehicle tyre information placard in the car to maintain proper tyre pressure (Particularly driving on a highway and/or when carrying heavy loads).
- Never bleed or reduce air pressure when tyres are hot from driving.
- Over- or under-inflation is dangerous and could lead to accidents or tyre damage.
- Check tyre inflation pressure (including spare tyre) at least once a month and before every long trip.
- Stones, gravel and other foreign objects stuck in the tyre treads may damage the tyre. Remove foreign objects from the tyre treads.
- Tyre should only be mounted by professionally trained persons.
- Objects in the road such as potholes, glass, metal, rocks, wood debris, kerbstones and such, which could damage a tyre should be safely avoided.
- To preserve traffic safety and tyre life, YOKOHAMA recommends driving safely and avoiding hard acceleration, braking or cornering in unnecessary situations.
- If you feel the car is unstable or feel any unusual noises or vibrations, stop your car in a safe place and inspect

your tyres. Even if no visible defects are found, drive slowly and ask your tyre dealer to inspect your tyres as soon as possible.

The local regulations for the proper usage of Car Tyres may differ from country to country. Please make sure to check foreign regulations carefully, before going abroad.

To preserve traffic safety, YOKOHAMA recommends driving substantially slower under adverse weather or road conditions.

Fuel saving and road safety depend heavily on the behaviour of drivers and in particular on the following: eco driving can significantly reduce fuel consumption; tyre pressure needs to be regularly checked to optimise fuel efficiency and wet grip; stopping distances must always be respected.

Ice grip tyres are specifically designed for road surfaces covered with ice and compact snow, and should only be used in very severe climate conditions (e.g. cold temperatures). Using ice grip tyres in less severe climate condition (e.g. wet conditions or warmer temperatures) could result in sub-optimal performance, in particular for wet grip, handling and wear.

Never use a tyre under the following conditions and replace tyres immediately:

- If the tread has worn to the tread wear indicator.
- If breaks in the fabric appear.
- If cords or wires are exposed.

Storage of steel belted radial tyres:

- Keep your tyres away from direct sunlight and locations with high temperature, high moisture, heavy electrical machinery, welders etc.
- Tyres should be preferably stored in a cool, dry, and dark room with a controlled environment.

Important notice for use of Runflat tyre (ZPS)

- A vehicle must be equipped with a tyre pressure monitoring system.
- After a low pressure warning has been indicated:
 - do not exceed 80 km/h (50 mph).
 - do not travel more than 80 km (50 miles).
 - do not re-inflate after run flat operation and do not repair.

Tread Wear Indicator

Triangle marks(▲) on the sidewall show the tread groove position of the "tread wear indicators", the "tread wear indicators" represent 1.6 mm of remaining tread depth at which time the tyre should be replaced.

Constructions and specifications are subject to change with or without notice.

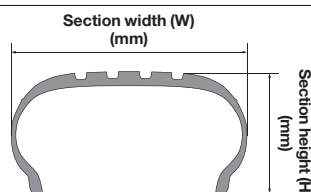
For information about the EU Tyre Label, tyre labelling data and further technical details, see the corresponding sections inside this catalogue or price list respectively. You can also refer to the YOKOHAMA website www.yokohama.eu (not for country specific product and size availability).

Technical Information/For Your Comfort & Safety

Aspect ratio

The aspect ratio is the ratio of a tyre's section height (H) to its section width (W).

$$\text{Aspect ratio (\%)} = \frac{H}{W} \times 100$$



Reinforced (Extra Load) Indication

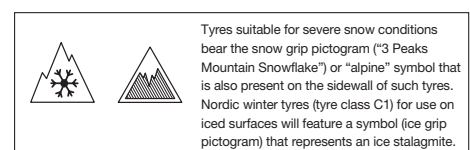
Passenger car tyres designed for loads and inflation pressures higher than the standard version.

Tyre rotation

Tyre rotation is the regular practice of changing the position of each tyre on the car to minimise abnormal (or uneven) tread wear, which may cause:

1. Abnormal vibration ("shimmy")
2. Tyre noise
3. Decreased riding comfort
4. Shorter tyre life

Note: We recommend that you rotate your tyres immediately if you recognise any of the above-mentioned conditions (especially on your front tyres).



Load-capacity index

The load index is the maximum load-carrying capacity of a tyre under a specific condition.

LI	kg	LI	kg	LI	kg
61	257	81	462	101	825
62	265	82	475	102	850
63	272	83	487	103	875
64	280	84	500	104	900
65	290	85	515	105	925
66	300	86	530	106	950
67	307	87	545	107	975
68	315	88	560	108	1000
69	325	89	580	109	1030
70	335	90	600	110	1060
71	345	91	615	111	1090
72	355	92	630	112	1120
73	365	93	650	113	1150
74	375	94	670	114	1180
75	387	95	690	115	1215
76	400	96	710	116	1250
77	412	97	730	117	1285
78	425	98	750	118	1320
79	437	99	775	119	1360
80	450	100	800	120	1400
				121	1450
				122	1500
				123	1550

Speed category symbol

The speed symbol refers to the maximum speed capabilities of the tyre. It is only valid for tyres that are properly inflated and loaded within their assigned load index.

Speed category symbol	Speed (km/h)
N	140
P	150
Q	160
R	170
S	180
T	190
H	210
V	240
W	270
Y	300
(Y)	over 300

- Never mount a tyre on a rim that is damaged or which has been repaired by welding or brazing.
- Never inflate beyond 275 kPa (2.75 bar, 40 psi) to seat beads.
- Tyre inflation should be done in a safety cage.
- Do not mix different tyre size designations or constructions on the same axle, except for limited use of temporary spare tyres.
- Outer diameter of wheel should be the same as inner diameter of tyre.
- Make sure to follow instructions in the car owner's manual or on the vehicle tyre information placard in the car to maintain proper tyre pressure (Particularly driving on a highway and/or when carrying heavy loads).
- Never bleed or reduce air pressure when tyres are hot from driving.
- Over- or under-inflation is dangerous and could lead to accidents or tyre damage.
- Check tyre inflation pressure (including spare tyre) at least once a month and before every long trip.
- Stones, gravel and other foreign objects stuck in the tyre treads may damage the tyre. Remove foreign objects from the tyre treads.
- Tyre should only be mounted by professionally trained persons.
- Objects in the road such as potholes, glass, metal, rocks, wood debris, kerbstones and such, which could damage a tyre should be safely avoided.
- To preserve traffic safety and tyre life, YOKOHAMA recommends driving safely and avoiding hard acceleration, braking or cornering in unnecessary situations.
- If you feel the car is unstable or feel any unusual noises or vibrations, stop your car in a safe place and inspect your tyres. Even if no

visible defects are found, drive slowly and ask your tyre dealer to inspect your tyres as soon as possible.

The local regulations for the proper usage of Car Tyres may differ from country to country. Please make sure to check foreign regulations carefully, before going abroad.

To preserve traffic safety, YOKOHAMA recommends driving substantially slower under adverse weather or road conditions.

Fuel saving and road safety depend heavily on the behaviour of drivers and in particular on the following: eco driving can significantly reduce fuel consumption; tyre pressure needs to be regularly checked to optimise fuel efficiency and wet grip; stopping distances must always be respected.

Ice grip tyres are specifically designed for road surfaces covered with ice and compact snow, and should only be used in very severe climate conditions (e.g. cold temperatures). Using ice grip tyres in less severe climate condition (e.g. wet conditions or warmer temperatures) could result in sub-optimal performance, in particular for wet grip, handling and wear.

Never use a tyre under the following conditions and replace tyres immediately:

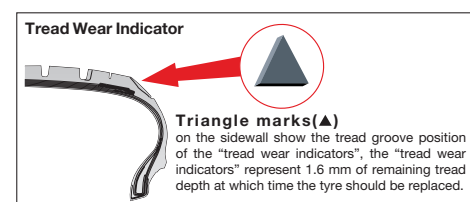
- If the tread has worn to the tread wear indicator.
- If breaks in the fabric appear.
- If cords or wires are exposed.

Storage of steel belted radial tyres:

- Keep your tyres away from direct sunlight and locations with high temperature, high moisture, heavy electrical machinery, welders etc.
- Tyres should be preferably stored in a cool, dry, and dark room with a controlled environment.

Important notice for use of Runflat tyre (ZPS)

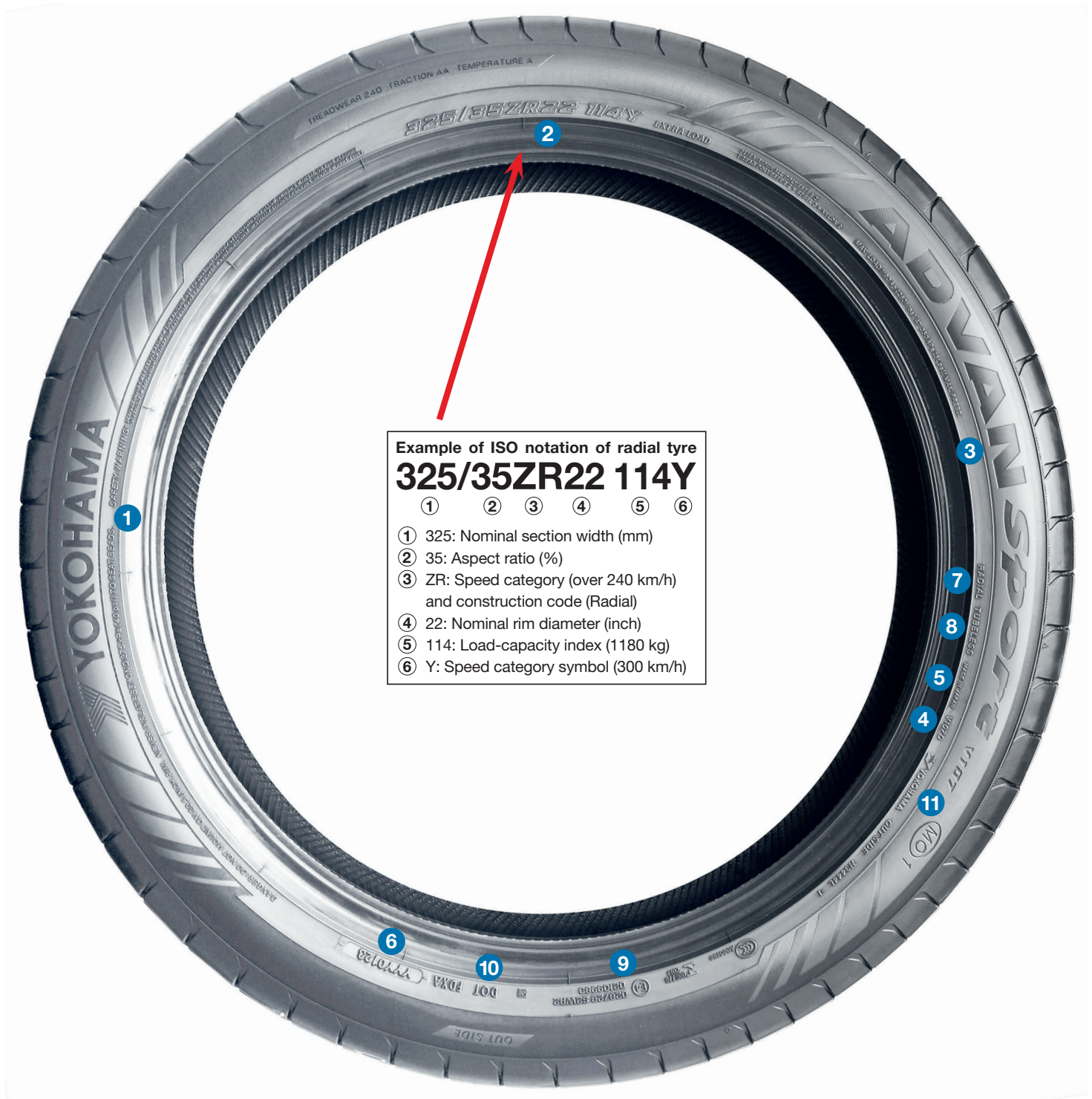
- A vehicle must be equipped with a tyre pressure monitoring system.
- After a low pressure warning has been indicated:
 - do not exceed 80 km/h (50 mph).
 - do not travel more than 80 km (50 miles).
 - do not re-inflate after run flat operation and do not repair.



Constructions and specifications are subject to change with or without notice.

For information about the EU Tyre Label, tyre labelling data and further technical details, see the corresponding sections inside this catalogue or price list respectively. You can also refer to the YOKOHAMA website www.yokohama.eu (not for country specific product and size availability).

How to read the tyre code



Example of ISO notation of radial tyre
325/35ZR22 114Y

①	②	③	④	⑤	⑥
① 325: Nominal section width (mm)	② 35: Aspect ratio (%)	③ ZR: Speed category (over 240 km/h) and construction code (Radial)	④ 22: Nominal rim diameter (inch)	⑤ 114: Load-capacity index (1180 kg)	⑥ Y: Speed category symbol (300 km/h)

Sample tyre for explanation

- ① Manufacturer's Name
- ② Tyre Size Designation
- ③ Brand Name
- ④ Tread Pattern Name
- ⑤ Country of Origin
- ⑥ Identification Serial Number
- ⑦ "RADIAL" Designation ---The word "RADIAL" is marked for a radial ply tyre.
- ⑧ "TUBELESS" Designation ---The word "TUBELESS" must be branded on a tubeless type tyre.
- ⑨ YOKOHAMA tyres are marked in accordance with international regulations. So the sidewall is marked with a circle containing an E and the number of the country of homologation. This marking is followed by a multi-digit homologation number. e.g. (E4) 1234567/987654 S2WR2 (4 = Netherlands)
- ⑩ DOT Mark ---The symbol certifying compliance with FMVSS respectively.
- ⑪ Original Equipment Manufacturer Letters --- The symbol varies according to car manufacturers, and signify approval by these. (e.g. AO mark signifies AUDI, MO Mark signifies MERCEDES, N-0 and N-1 signifies PORSCHE.)

NOTES

